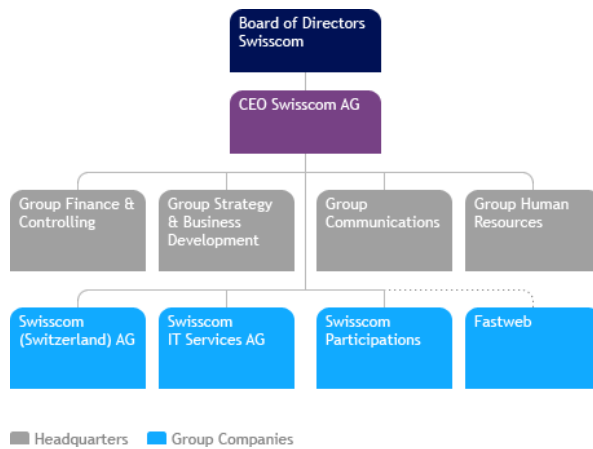


# Fact sheet on the company organisation

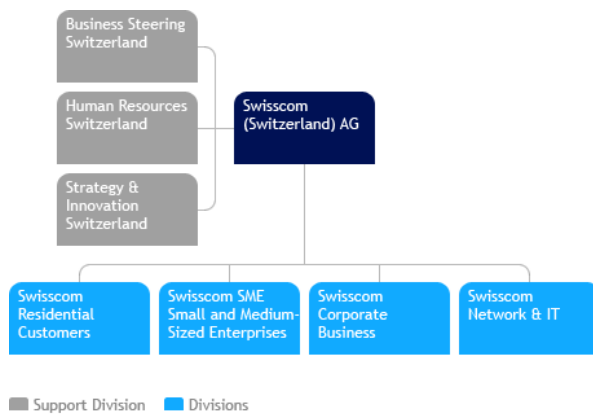
Swisscom's activities are focused on three operating segments: Swisscom Switzerland, Swisscom IT Services and Fastweb. Swisscom Switzerland is the contact partner for telecoms and data services in Switzerland, while in Italy the contact partner is Fastweb. Swisscom IT Services supports corporate customers in all IT-related matters.

## Swisscom Group organisational structure



The new Group structure provides customers with access to a full range of products and services, all from a single source. The new structure also reflects changes in technology, including the trend towards the convergence of fixed and mobile communications, IT, media and entertainment (TIME market), and guarantees customers a single point of contact for simple and efficient communications solutions.

## Swisscom (Switzerland) Ltd organisational structure



Under the umbrella of Swisscom Switzerland, the „Residential Customers“, „Small and Medium-Sized Enterprises“, „Corporate Business“ and „Network & IT“ operating segments, including support functions, focus on their respective target group. The Group Executive Board comprises the CEO of Swisscom Ltd, the heads of the Group divisions, the CEO of Swisscom IT Services Ltd and the heads of the divisions of Swisscom (Switzerland) Ltd.