

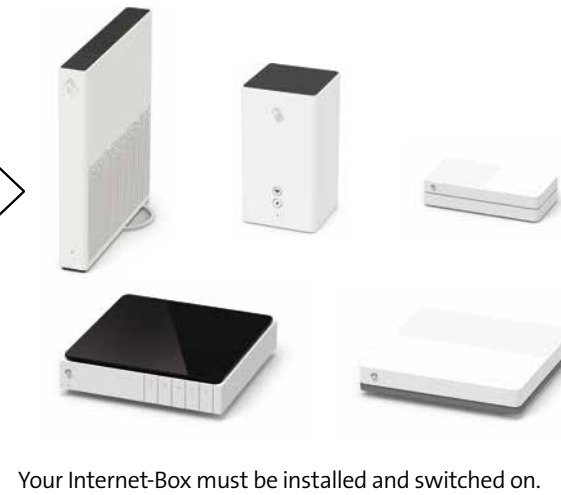
# VTech HD10



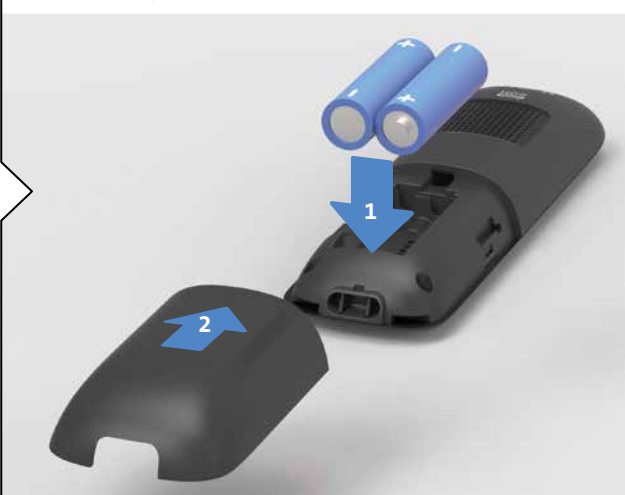
➔ You have received:



**1** You have one of these routers:



**2** Insert the batteries and close the compartment.



## Installation overview



**3** Select your language.



**4** Take your handset and go to the place your Internet-Box is installed.

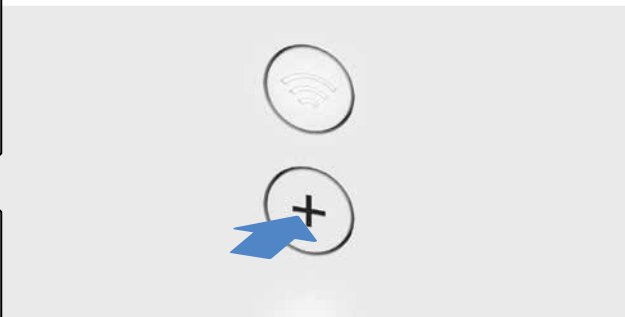


**6** Connect the adapter to the power socket of your choice.



We recommend you to charge your handset for at least 15 hours once you have set it up.

**5** Press the connection button on your Internet-Box.



Wait for the handset to connect. If the connection has failed, repeat steps 4–5. You can find the registration mode of the handset under:  
 > OK > Settings > Advanced settings > Connection > Connect > OK



Your HD-Phone VTech HD10 is now set up.

**vtech**  
Quick Start Guide



Designed to fit your home.  
And your life.

VTech Telecommunications Ltd.  
A member of THE VTECH GROUP OF COMPANIES.  
Specifications are subject to change without notice.  
© 2017 for VTech Telecommunications Ltd.  
All rights reserved. Version 3 08/17.

KKD+JM (B2C-TSP-UID) 91-010546-050-100 05/2021 EN

# Phonebook

Use your smartphone contacts on your VTech HD10 handset.

**Transfer your smartphone contacts to the Internet-Box phonebook** at the press of a button via the «Swisscom Home App». You can then access the Internet-Box phonebook with your handset.



You can easily edit contacts directly on the handset or Internet-Box web portal at <http://internetbox>.

**Add new contact:**  
> OK > Phonebook > New contact

**Sort order of your contacts**  
You can sort your phonebook contacts by first or last name:  
> OK > Settings > Advanced settings > Sort order contacts

For additional details visit  
[www.swisscom.ch/internetbox-phonebook](http://www.swisscom.ch/internetbox-phonebook)

**Before replacing the Internet-Box or a reset save the settings at <http://internetbox>:**  
> Settings > Save configurations or  
> Advanced > Save current configuration

# Alarm clock

**Set alarm clock**  
> OK > Settings > Alarm clock > Set your alarm clock > Save  
You can choose between «One time», «All days» or «Monday to Friday».

**When the alarm sounds**  
Left top key : Turn off  
Right top key : Snooze (alarm repetition after 5 min.)

After 10 minutes of ringing the alarm will turn off automatically.

**Turn off alarm clock setting**  
> OK > Settings > Alarm clock > Off

# Choose ringtones

> OK > Settings > Ringtones  
Choose between «External calls» and «Internal calls».

**Adjust ringtone volumes**  
During standby mode, press navigating keys ▲▼ to adjust the ringtone volume.

# Comfort tones

> OK > Settings > Comfort tones  
Select the desired function and press «OK» to turn the comfort tone off / on. Select «Save» to confirm the modification.

# Useful information on your handset

**ECO** Ecomode plus  
When in standby, Ecomode plus is automatically activated and reduces the transmission power by 100%.

**Signal strength icon**  
The icon indicates 0 - 4 bars depending on signal strength. It flashes when the handset is out of range.  
> Reduce the distance to your Internet-Box.

**Red X icon**  
Your handset is not connected.  
> Please connect your handset (see step 5).

Set up short dial / Back key / turn off alarm

Accept call / during talk mode switch on or off handsfree speaker / List of calls placed

Long press: COMBOX®

Shift key / caps lock



**Charge level icon**  
The charge level icon flashes when the batteries are empty.  
> Place your handset back on the charging cradle.

**Alarm clock icon**  
The alarm clock is set.

**COMBOX® messages icon**

Handset name

Navigating in the menu / OK  
Adjust volume (ringtones and talk volume)

Menu / confirm key / snooze alarm  
Flashing fast: incoming call  
Flashing slowly: missed call

End call  
Long press: switch handset on / off

Long press: lock / unlock keypad

Microphone

# Auto talk

In order to accept a call you can simply pick up your handset resting in its charging cradle without having to press the green call button. Activate Auto talk if you would like to use this function:

> OK > Settings > Advanced settings > Auto talk > Turn on

# Short dialling (numbers 0 to 9)

You can assign keys (0 - 9) for the phone numbers that are important to you.

**Set up short dialling**  
> Quickdial > Select number > Options > Enter destination  
> OK

**To call the saved number,**  
press the key assigned to the phone number for a long time.

You can assign the number of another internal handset, a contact out of your phonebook or you can manually type in the number desired.

# Clock display

If your clock function is activated your handset will display time and date when resting on the charging cradle. You can turn off this function:  
> OK > Settings > Advanced settings > Clock display  
> Turn off

**Brightness of the clock display**  
> OK > Settings > Advanced settings > Clock display  
You can choose between «Bright», «Medium» and «Dark».

# Change handset name

> OK > Settings > Advanced settings > Handset name  
Enter the name of your choice, for example «living room».

# Factory reset

> OK > Settings > Advanced settings > Factory reset > OK > OK

All settings will be cancelled and your handset disconnected. However this will not concern your phonebook nor your call records.

# Tips on making calls

**Missed calls**  
> OK > Missed calls: ☒ missed calls  
Use «Options» to call back, save the number in your phonebook or delete this call.

**Call records**  
> OK > Call records:  
☒ call made  
☒ accepted call  
☒ missed call

**Search for a contact in your phonebook**  
> OK > Phonebook > Search contact > OK  
You can type in one or more letters.  
Short search:  
> OK > Phonebook > Type in one letter.

**Setting up your COMBOX®**  
> OK > COMBOX messages  
Please add your phone number to the COMBOX® number 086 with your phone number (enter without blanks).

**Forward external calls in-house**  
> Options > Transfer > OK > Choose another handset (for example DECT204) > OK > Internal connection to DECT204 is now active > Options > Transfer > OK

**Call management**  
Call barring (the last caller will be blocked /barred):  
> OK > Settings > Call management > Call barring\*  
Do not disturb (all callers will hear a busy tone):  
> OK > Settings > Call management > Do not disturb\*  
Block anonymous (Anonymous callers will hear a standard announcement):  
> OK > Settings > Call management > Block anonymous\*  
Call forwarding:  
> OK > Settings > Call management > Call forwarding  
Call anonymously (your number will not be displayed):  
> OK > Settings > Call management > Call anonymously

\* With multiple phone numbers (MultiLINE)  
This function will only be set to the outgoing number in use.

# Safety instructions

**Please note**  
> Protect your hearing: Ringtones and notification alerts are transmitted on the handset over the loudspeaker. Please do not hold the handset up to your ear when one of those functions is switched on – your hearing may otherwise be impaired.  
> In case of power outage, no emergency calls can be made with this handset. Please ensure that other calling options are available if needed.  
> Only use the handset in ambient temperatures from +5 to +40 degrees Celsius and protect it from direct sunlight.  
> Do not use the handset/charger in potentially explosive environments (e.g. paintshops, petrol stations etc.).  
> Do not place the handset/charger in bathrooms or wet areas.  
> Use only the adapter supplied (Manufacturer: VTPL / model number: VT04EEU06045). Input: AC 100-240V, 50/60Hz, 0.15A. Output: DC 6.0V, 0.45A, 2.7W. Average active efficiency: 73.7% (min.). No-load power consumption: 0.10W (max.)  
> For pluggable equipment, the socket-outlet (power adaptor) shall be installed near the equipment and shall be easily accessible.  
> The applied nameplate is located at the bottom of the product.  
> RF Frequency Band: 1881.792 MHz - 1897.344 MHz; max transmit power: 250 mW / 24 dBm.

**Impairment due to radio signals**  
The functioning of medical equipment may be impaired by the radio signals. Hearing device wearers should note that when using the handset, radio signals in the hearing device might interfere and cause unpleasant buzzing sounds.

**Rechargeable batteries**  
Please use only NiMH AAA rechargeable batteries. Do not use any other chargers, as the rechargeable batteries may otherwise be damaged. Avoid batteries coming into contact with water or fire. During charging batteries may heat up. This is normal and not dangerous. CAUTION: risk of explosion if battery is replaced by an incorrect type. Dispose of used batteries according to the instructions.



Return your device to Swisscom.



**CE** Handset and charger compliance to EU Directive 2014/53/EU on radio systems and telecommunication equipment is certified by the CE symbol. The handset complies with CAT-iq Standard 2.0. The conformity declaration is available on the following website: [www.swisscom.ch/hdphones-help](http://www.swisscom.ch/hdphones-help)