

Internet-Box copper kit (IP)

Switch to a DSL connection

(Deutsch auf der Rückseite)



Start

The package includes:



1

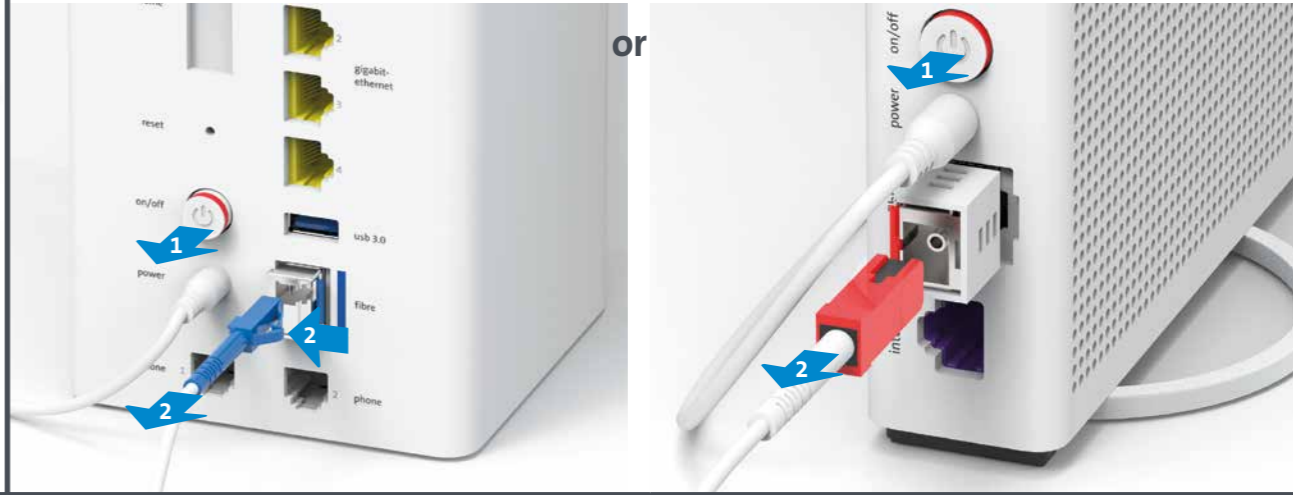
You have one of these Internet-Boxes.



Installation is identical for all Internet-Boxes. It is explained stepwise for Internet-Box 2.

2

Switch off the Internet-Box and remove the existing fibre optic cable.

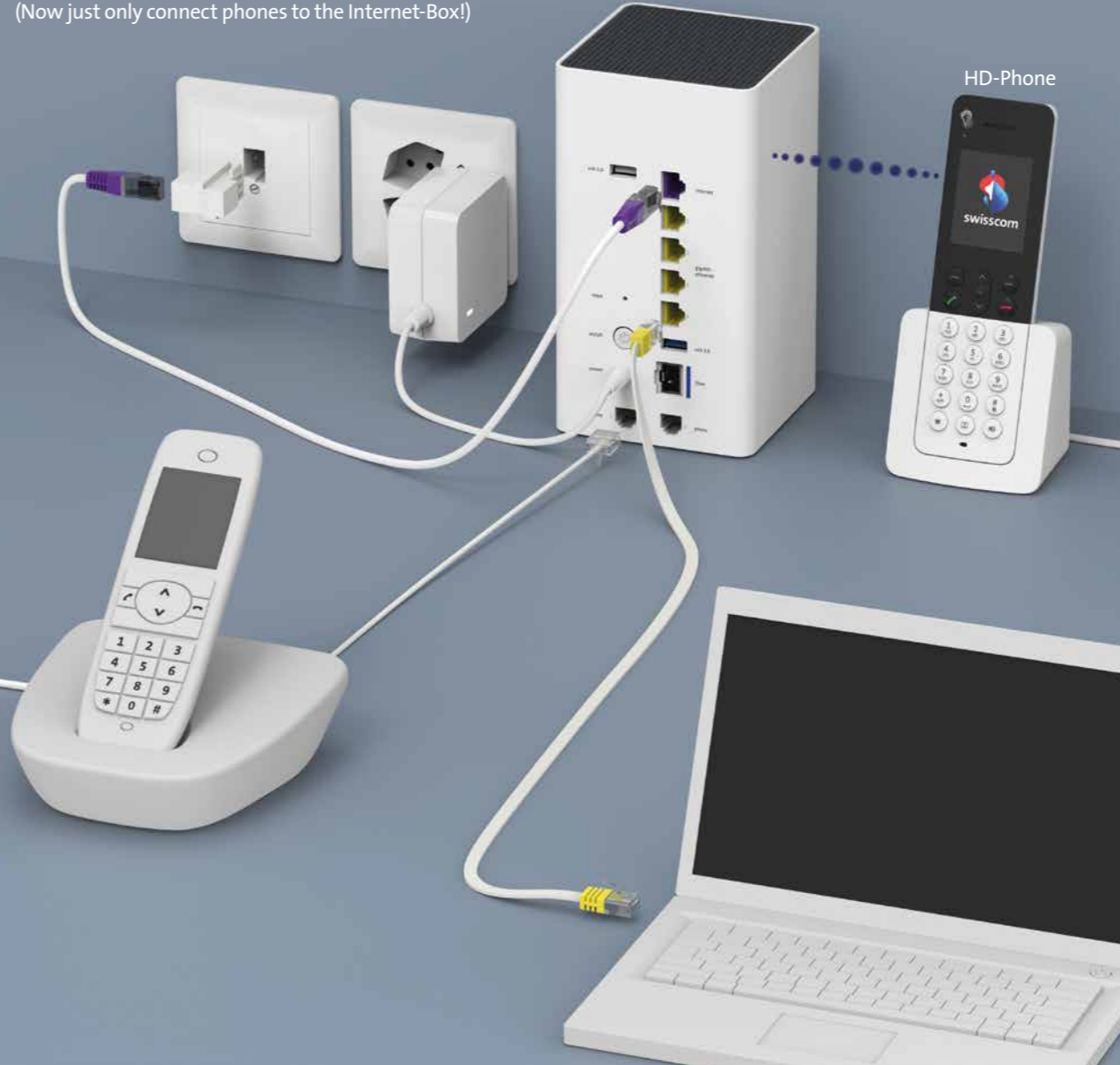


7

Your Internet connection is set up again.

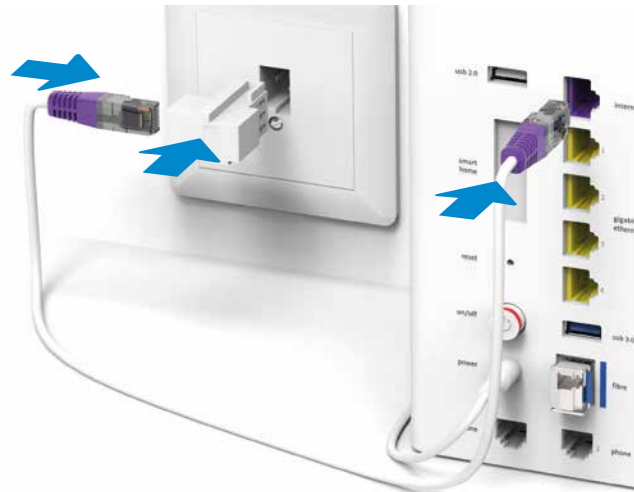
Installation overview

(Now just only connect phones to the Internet-Box!)



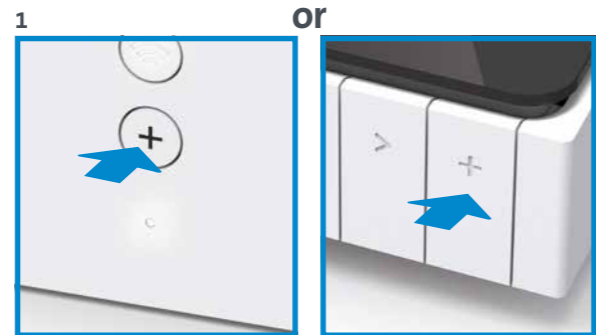
3

Connect the new DSL cable to the white adapter.



Wireless HD-Phone connections (optionally)

For information about HD-Phones from Swisscom please visit www.swisscom.ch/hdphones



2

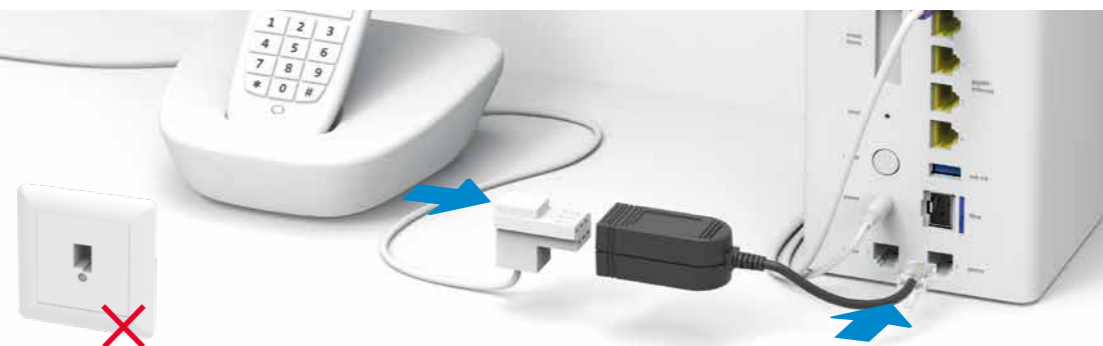


- 1 Internet-Box: press + button
- 2 HD-Phone: Select connection mode in the settings

N.B.: conventional DECT wireless phones cannot be linked directly to the Internet-Box over a wireless connection. Please use the «phone 1 / 2» ports.

6

Connect your telephone (if you are a fixed network subscriber)



Now only connect your telephone and/or fax machine to the Internet Box (phone 1 / 2) – and not the telephone socket as before – if necessary with the black adapter. **Exception:** You can only connect your telephone and fax devices to all the telephone sockets in your building once you have installed a digital socket.

5

4 Connect the Internet-Box to the power and switch it on. Please wait for 5 minutes.



After 5 minutes continue with step 5.