



Gigaset CL660HX

Quick and easy to set up

(Deutsch auf der Rückseite)

➔ You have received:



1 You have one of these routers:



2 Insert the batteries and close the compartment.



Installation overview



3 Select your language.



4 Take your phone and go to the place your router is installed.

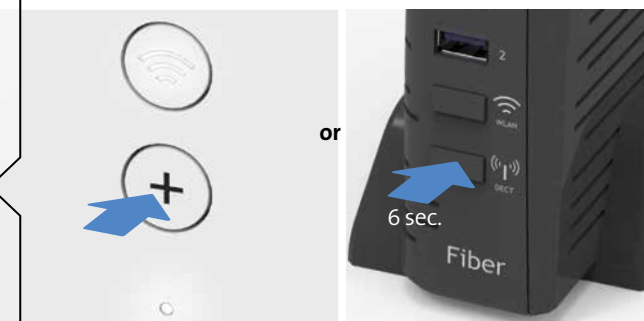


6 Connect the adapter to the power socket of your choice.



When you first set it up, we recommend fully charging the telephone until the display icon ⚡ is no longer visible.

5 Press the connection button on your router.



Wait for the phone to connect. If the connection hasn't worked, repeat steps 4–5. You can see the registration mode of the phone in the menu under > Settings > Registration > Register Handset > OK



Your Gigaset CL660HX is now set up.

KKD+JM (B2C-TSP-UID) 04/2021 EN