

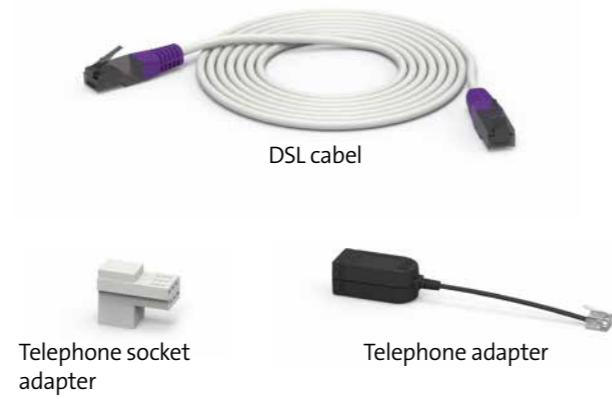


## Internet-Box Kupfer-Kit (IP)

# Switch to a DSL connection

(Deutsch auf der Rückseite)

➔ The package includes:

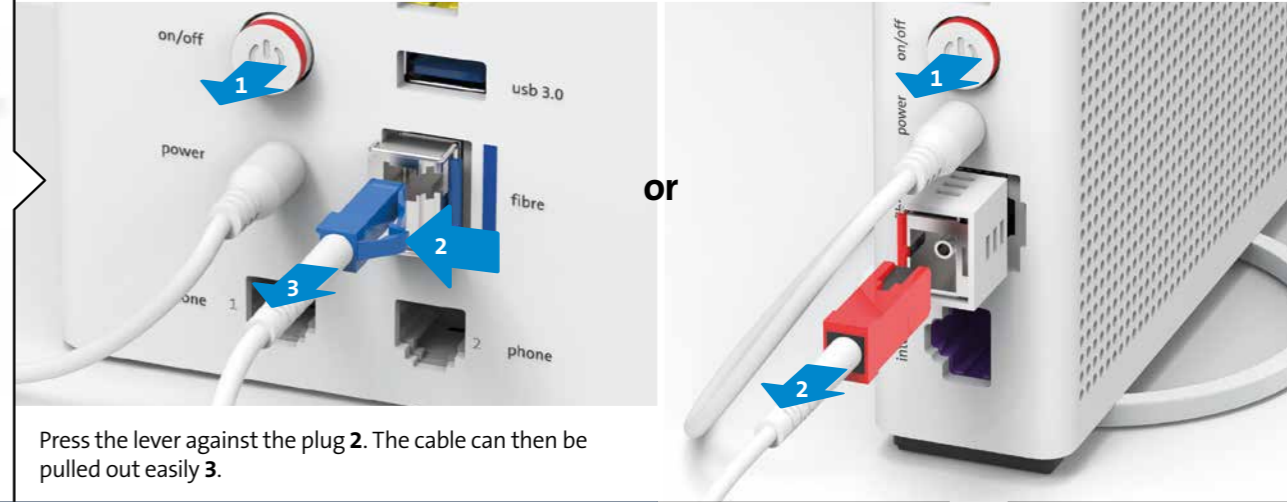


**1** You have one of these Internet-Boxes.



Installation is identical for all Internet-Boxes.

**2** Switch off the Internet-Box and remove the existing fibre optic cable.



Press the lever against the plug **2**. The cable can then be pulled out easily **3**.

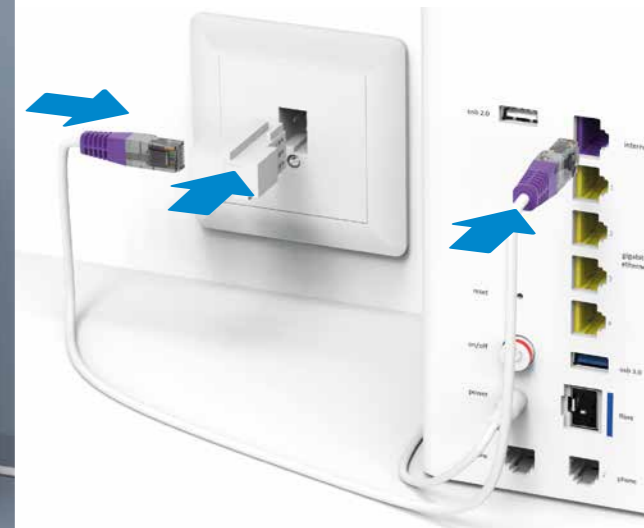


Your Internet is now set up.

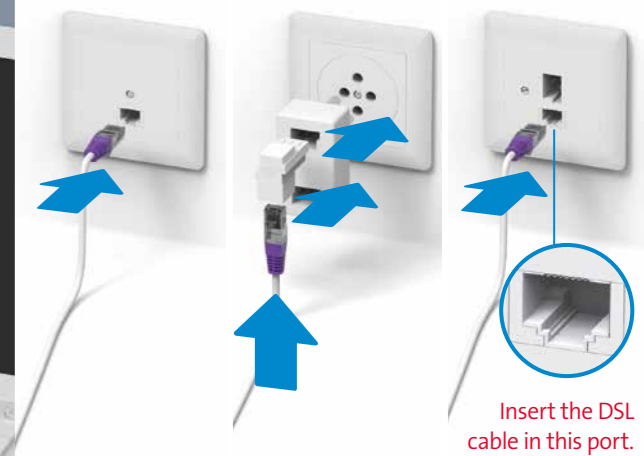
Installation overview  
(Now just only connect phones to the Internet-Box.)



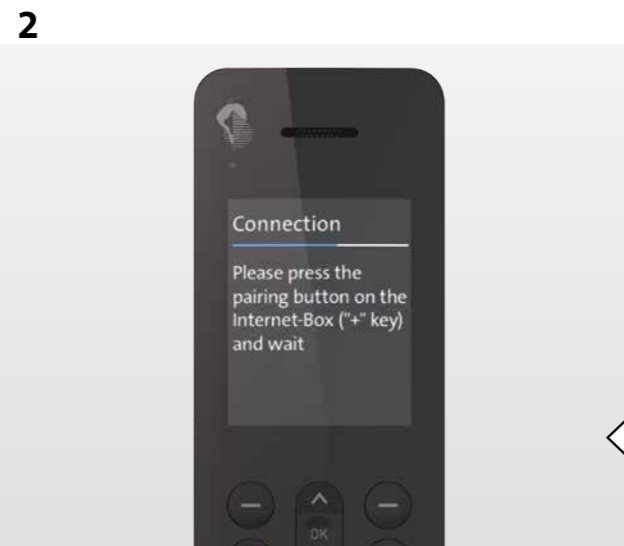
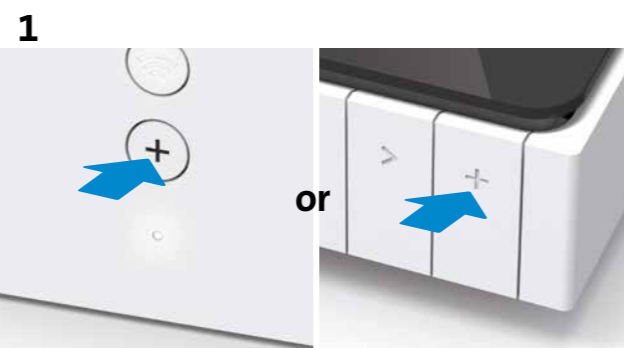
**3** Connect the new DSL cable to the white adapter.



DSL cable variations:  
a) RJ45 telephone socket    b) Four-pin socket    c) Digital socket



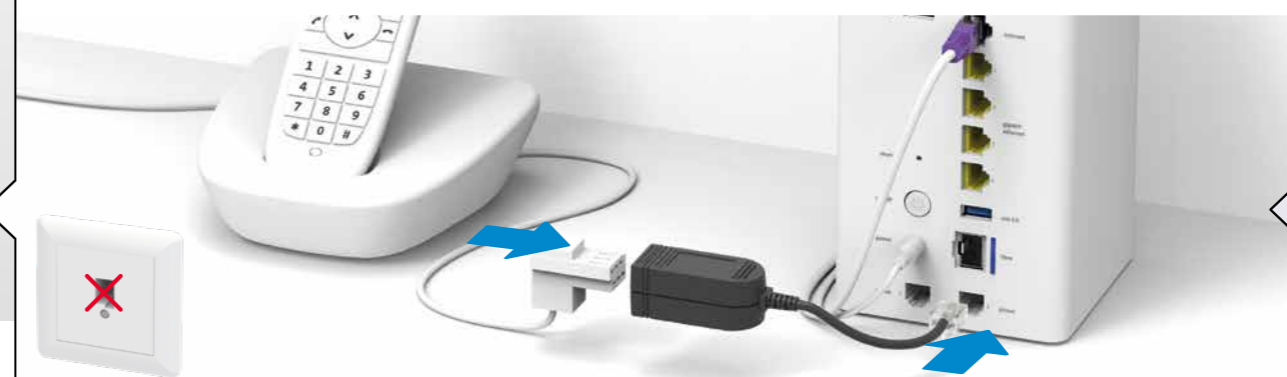
**6** Wireless HD-Phone connections (optionally)  
For information about HD-Phones from Swisscom please visit [www.swisscom.ch/hdphones](http://www.swisscom.ch/hdphones)



- 1** Internet-Box: press +button
- 2** HD-Phone: select connection mode in the settings

N.B.: conventional DECT wireless phones cannot be linked directly to the Internet-Box over a wireless connection. Please use the «phone 1/2» ports.

**5** Connect your telephone.  
(if you are a fixed network subscriber)



Now only connect your telephone and/or fax machine to the Internet Box (phone 1/2) – and not the telephone socket as before – if necessary with the black adapter.  
Exception: you can only connect your telephone and fax devices to all the telephone sockets in your building once you have installed a digital socket (see step 3).

**4** Connect the Internet-Box to the power and switch it on. Please wait for 5 minutes.



After 5 minutes continue with step 5.