

Network wiring cupboard connection kit

How to set-up your wiring cupboard

(Deutsch auf der Rückseite)



Network wiring

Network connections have several functions.

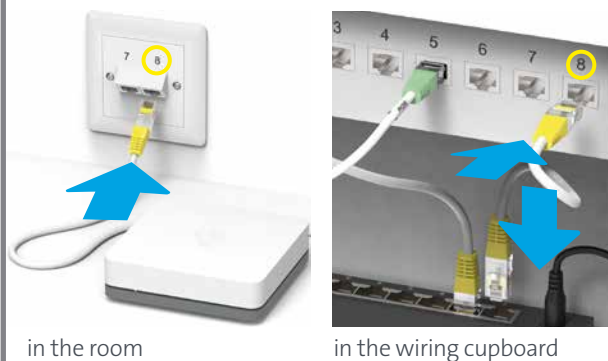
You can choose to connect a **telephone or network device** (e.g. a computer or the Swisscom TV-Box) at the network connections in rooms.

Analogue telephone

If you want to connect an **analogue telephone** the green «Phone» end of the Y cable must be attached to the corresponding connection in the wiring cupboard (see step 4).

Network device

If you connect a network device (in this case a TV-Box) an Ethernet connection must be created between the corresponding connection (in this case «8») and the Ethernet-Switch.



Swisscom TV

Use a **multicast-capable Ethernet-Switch** for Swisscom TV. This is available in the Swisscom Shop.

The network connection needs to be Gigabit-capable.

Two network connections per room

If only one network connection is available per room, we recommend that you request Swisscom or an electrician to modify this. This work is chargeable.

Fibre-optic installation

If your home has a fibre-optic connection and you still require network cabling, you will require Swisscom or an electrician to modify this. This work is chargeable.

Please note: An additional Ethernet-Switch enables the continued use of existing multimedia sockets.

www.swisscom.ch/help

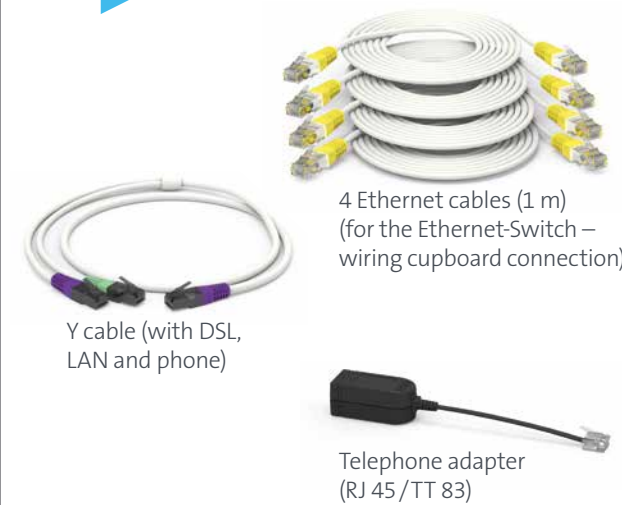
Swisscom (Switzerland) Ltd.
Contact Center
CH-3050 Bern

www.swisscom.ch
0800 800 800

KKD+JM (PMK-UID) 02/2018 EN

Start

You have received:



1

Position your Internet-Box:



- > Upright and centrally in your home for better WLAN / DECT reception
- > Close to two network connections (Gigabit) (in this case «1 / 2») for the cabling with the wiring cupboard

2

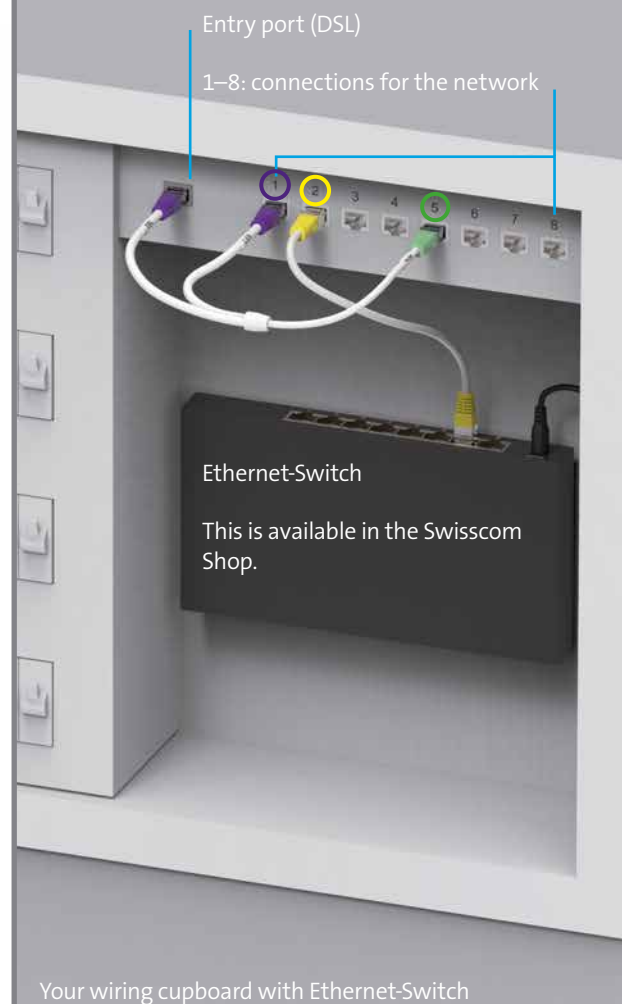
Connect the Internet-Box and network connection using the DSL cable.



(Network connection «1» in this example)

Installation example

Your wiring cupboard may be grouped differently, depending on the manufacturer and model. In principle, however, the wiring remains the same.



Your wiring cupboard with Ethernet-Switch



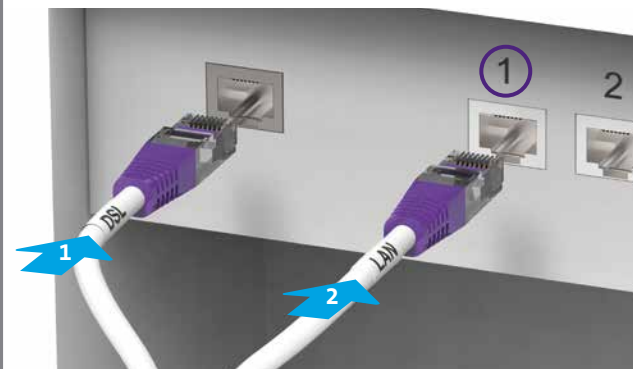
Your router in a centrally located room



Your analogue telephone (optionally)

3

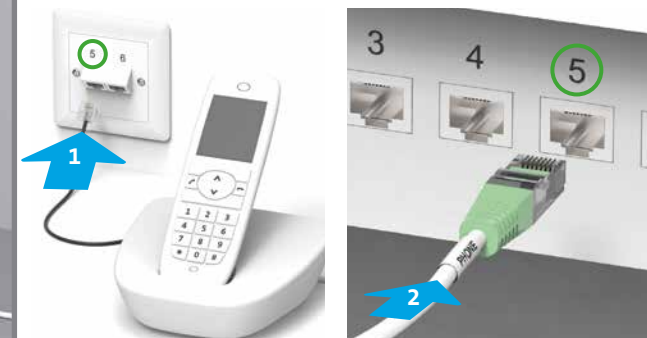
Connect the Y cable (purple plug).



- 1 Connect the «DSL» end to the input jack.
- 2 Connect the «LAN» end in the same port (here «1») as the Internet-Box (see step 2).

4

You can connect **one** analogue telephone.



- 1 Connect the telephone, using an adapter if necessary, to the network connection.
- 2 Connect the «Phone» end of the Y cable in the same connection of the wiring cupboard («5» in this example).

7

You can read about how you set up the network connections in your home in the left column under «Network device».



You have now completed the wiring cupboard installation.

6

Connect the Ethernet-Switch with the same connection in the wiring cupboard.



Connect the same connection as in step 5 (in this example «2») and the Ethernet-Switch with an Ethernet cable.

5

Connect the Internet-Box and the network connection using an Ethernet cable.

