

**Please install within 14 days\*!**

# How to set up your Internet-Booster



**\* Important notice:**

A place in the mobile network is reserved for you for 14 days. Since the number of seats is limited, unused seats may be released for other customers after the deadline has expired.

Swisscom (Switzerland) Ltd.  
Postfach  
3050 Bern  
www.swisscom.ch  
0800 800 800

KKD+JM (B2C-TSP-UID) 11014817 08/2020 EN

**Start** You have received:

**Please read the security information on the back and follow the guidelines during the installation.**

**1** Your Internet-Box 2 must be installed and switched on.

**Using the app instead of paper instructions?**  
See back for simple installation details using the «Swisscom Home App».

**2** Use your smartphone to check which opening window gives you best 4G reception.

To ensure **optimum reception** the Internet-Booster is mounted on a window (**not a sliding window**).

**3** Clean the window in the assembly area (hinge side).

The Internet-Booster adheres reliably if the pane is **dry inside and outside, clean and dust-free**. It can be removed at any time without leaving marks, cleaned and replaced.

**11** The Internet-Booster installation is complete as soon as the LED lights up white permanently.

Installation overview

**4** Position one of the adhesive plates on the **outside**. Firmly secure the outdoor unit to it.

First remove the protective film. **Important:** press the adhesive plates **firmly all over** and the flat, black USB cable must not rest on any fittings.

Please wait if the LED flashes white.

Your device is activated and an update is in progress. The duration depends on your connection and can last up to 90 minutes.

**10** **Important:** do not switch off the device during this time!  
If a LED lights up red, please observe the tips on the back under «LED behaviour».

**5** Run the USB cable under the window frame.

Please ensure that the cable is not twisted.

**9** Connect the Internet-Booster and Internet-Box 2 with the Ethernet cable.

**Do not use either a powerline or Ethernet switch for the Internet-Booster!**  
For information on how to connect wirelessly (via WLAN), please refer to the back page of this leaflet.

**8** Connect the power adapter. Press on/off button in order to switch the device on.

Wait until both LEDs flash red.

**7** Position the second adhesive plate on the **inside** pane. Firmly secure the indoor unit to it.

**6** Connect the USB cable to the «antenna» port of the indoor unit.

Push in the connector firmly («click»).

# Installation using the «Swisscom Home App»



Installation is easy with the «Swisscom Home App». In the app, select:  
 > Internet > Internet-Booster > Install Internet-Booster

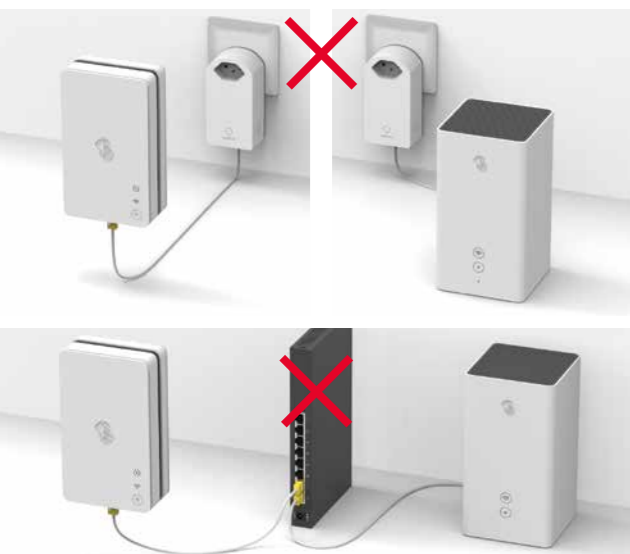


Instead of following these instructions you can let the app guide you through installation step-by-step. Once it is set up, the app shows you important information about connecting your Internet-Booster.

## Connect via WLAN or cable

A cable connection is always better than a wireless connection (WLAN connection). There is no loss of bandwidth with a cable connection. We recommend that you connect the Internet-Booster directly to the Internet-Box 2 with an Ethernet cable (see step 9 on the front).

**N.B. Do not connect either with a powerline or Ethernet switch!**



If you are unable to do so, you have two WLAN options:

- You can connect the Internet-Box 2 and the Internet-Booster directly through WLAN.
  - > Press the **+** button on the Internet-Box 2.
  - > Press the **+** button on the Internet-Booster.
  - LEDs flash white. Wait 15 minutes until the LED lights up white constantly.
- You can also connect the Internet-Booster by cable with a WLAN-Box. This ensures the best-possible WLAN connection between the devices.



> Continue with step 10 on the front.

## Positioning

Press or pull the device vigorously to mount or detach the Internet-Booster. Please therefore do not use very thin fragile window panes for installation.

### Position on the window

- > The Internet-Booster must be mounted on the hinge side so that the power cable only moves slightly when the window is opened.
- > Position the outdoor unit on the window so that no fittings are directly underneath it. The USB cable can be wedged into the window frame. To avoid damage, do not run the cable over any fittings.



- > Fasten the outdoor unit as close as possible to the window frame on the hinge side, so that the power cable only moves slightly when the window is opened.
- > The outdoor unit must be mounted at least 4 cm away from the lower window frame.

## Removing and repositioning

If you wish to remove the device from the window, please proceed as follows:

- > Pull on the device. The adhesive plate remains in place and the device releases from the adhesive plate.
- > Lift the adhesive plate at one corner so that it peels off effortlessly.
- > You can now mount the device elsewhere (see front page of instructions).

## Unplugging the USB cable

Please note that this connector has a built-in security mechanism.

Detach the clip by pressing it and then pull out the connector.



## LED behaviour

### LED: connection to the mobile network (4G / LTE)



- LED lights up white constantly – **good connection**
- LED is blinking white – **connection in progress**
  - > Wait until the LED changes (stops flashing or turns red). Do not switch off the device!
- LED lights up red constantly – **average connection**
  - > You may obtain a better connection if you mount the Internet-Booster on another window.
- LED is blinking red – **the device cannot connect.**
  - > Insufficient 4G reception. Change the position of the Internet-Booster. Try another window in the same room or another room.

### LED: connection to the Internet-Box 2 (WLAN)



- LED lights up white constantly – **good connection**
- LED is blinking white – **connection in progress**
- LED lights up red constantly – **average connection**
  - > Reduce the distance between the Internet-Box and Internet-Booster for a better connection.
- LED is blinking red – **no WLAN connection**
  - > Please check whether the Internet-Box WLAN is switched on. If the Internet-Booster LED still flashes, reduce the distance between the two devices.

## Packaging

Use the box for something else – simply remove the logo and write something else on it.



Give your packaging a new lease of life. [www.swisscom.ch/rebox](http://www.swisscom.ch/rebox)

## Ports



- on/off:** switch the device on and off
- power:** port for power adapter
- ethernet:** port for Ethernet cable (cable connection to the Internet-Box 2)
- antenna:** port for outdoor unit USB cable
- reset:** reset button
- Connection button** (pairing: connect your WLAN-Booster and Internet-Box)

## Secure adhesion to the window pane

Thanks to their silicone surfaces the adhesive plates stick perfectly to clean, dry window panes and can be removed again for repositioning without leaving any marks. Clean the window pane with a commercially available glass cleaner. The Internet-Booster is weatherproof and designed for Swiss weather conditions.

- > Clean the window thoroughly on both sides for placement. Do not begin mounting until the window is completely clean and dry.

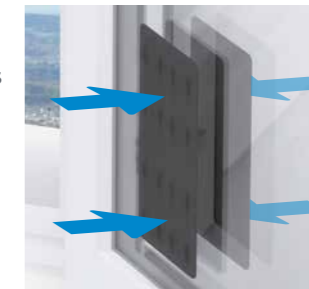


- > Do not touch the adhesive strips on the plates as this will impair adhesion.



- > To avoid falling, do not lean out of the window when mounting the device on the window. Always stay inside the room when mounting the two device parts.

- > Please ensure that the adhesive plate of the outdoor unit **fully adheres to the window**. To do so, press it firmly against the window over its entire surface. The outdoor unit must then be firmly secured to it.



- > If you notice that the adhesive plate is becoming unstuck, you must clean the window again. If necessary, rub a few drops of water over the adhesive plates with your finger.

- > Please contact Swisscom if the adhesive plates do not adhere sufficiently due to a defect.

- > The indoor unit must not be mounted outdoors.

- > Do not allow any liquid to seep into the indoor unit.

- > Check periodically if the outdoor unit is still secure.

## Securing the outdoor unit

Please preferably select a glass balcony door (not a sliding door). If this is not possible, please ensure that the window selected for positioning the Internet-Booster is not above an area where people/pedestrians can walk.



Push in the connector firmly («click»). This stops your device from falling down if it loosens over time.



## Security information

### Installation and maintenance

- > Do not place any other devices on the indoor and outdoor unit of the Internet-Booster.
- > Do not cover the indoor and outdoor unit of the Internet-Booster and always mount them upright.
- > The indoor unit may only be operated in an ambient temperature of between 5 and 40 °C, the outdoor unit between -30 and +50 °C.
- > Do not set the indoor unit close to heat sources, but in a dry well-ventilated place. No liquid may be allowed to seep into the unit.
- > Use a slight damp cloth for cleaning purposes.
- > Do not touch the indoor and outdoor units of the Internet-Booster during a storm.
- > You may not open, repair or modify the indoor and outdoor units yourself. Risk of electric shock.

### WLAN

The Internet-Booster indoor unit radiates radio frequencies. The indoor unit of the Internet-booster is restricted to indoor use only when operating in the 5150 - 5350 MHz frequency range (channel 36-64). The device should be placed such way, that there is always a minimal distance between human and device of 22 cm. Keep also a distance of 22 cm between the Internet-Booster indoor unit and other wireless devices like DECT phones. Maximal transmitting power of the Internet-Booster indoor unit:  
 WLAN (5150 - 5350 MHz) max. 23 dBm e.i.r.p.  
 WLAN(5470 - 5750 MHz) max. 23 dBm e.i.r.p.  
 Maximal transmitting power of the Internet-Booster outdoor unit:

WCDMA band I:	23 dBm
WCDMA band VIII:	23 dBm
LTE band 1:	23 dBm
LTE band 3:	23 dBm
LTE band 7:	23 dBm
LTE band 20:	23 dBm
LTE band 38:	23 dBm

### SAR MPE – RF Exposure Compliance

This device meets the EU requirements and the International Commission on Non-ionizing Radiation Protection (ICNIRP) on the limitation of exposure of the general public to electromagnetic fields by way of health protection. To comply with the RF exposure requirements, this equipment must be operated in a minimum of 22 cm separation distance to the user.

### Access and data processing

If the device is operated through a Swisscom connection, Swisscom shall have access to the device and to the data needed for processing, in particular for the purposes of remote maintenance and support (automatic setup, monitoring effective functioning, software updates). Please refer to the Internet Contract Terms for further details.

### Declaration of Conformity

ASKEY COMPUTER CORP. hereby declares that this wireless device is in compliance with the essential requirements and other relevant provisions of the the Radio Equipment Directive (RED). The Declaration of Conformity can be viewed at [www.swisscom.ch/internetbox-doc](http://www.swisscom.ch/internetbox-doc).

### Homologation and WEEE

The icon indicates, that the product shall not be treated as household waste. Instead it shall be submitted to Swisscom. The Internet-Booster, manufactured by Askey, was designed to meet the obligation of homologation and to comply with essential requirements and other relevant provisions of European Directive WEEE (Waste of Electrical and Electronic Equipment) 2012/19/EU.

### Manufacturer

Askey Computer Corp., 10F, No 119 Jiankang Rd, Zhonghe Dist., New Taipei City, Taiwan (R.O.C.)

For more details visit: [www.swisscom.ch/internet-booster](http://www.swisscom.ch/internet-booster)