

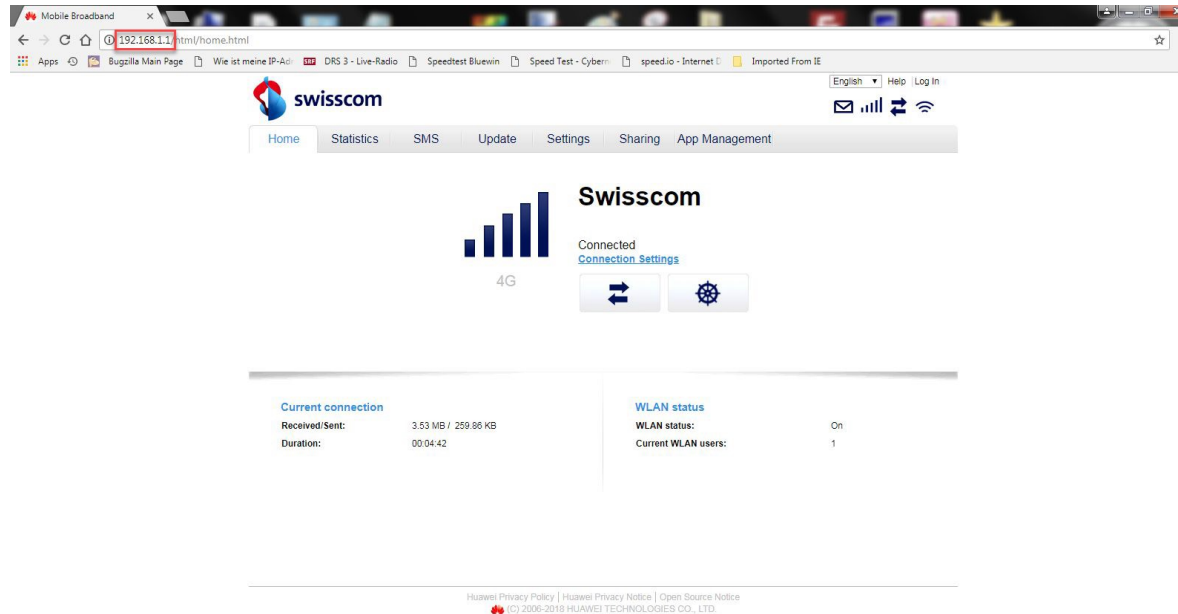
# Unlimited Huawei Router B315s-22



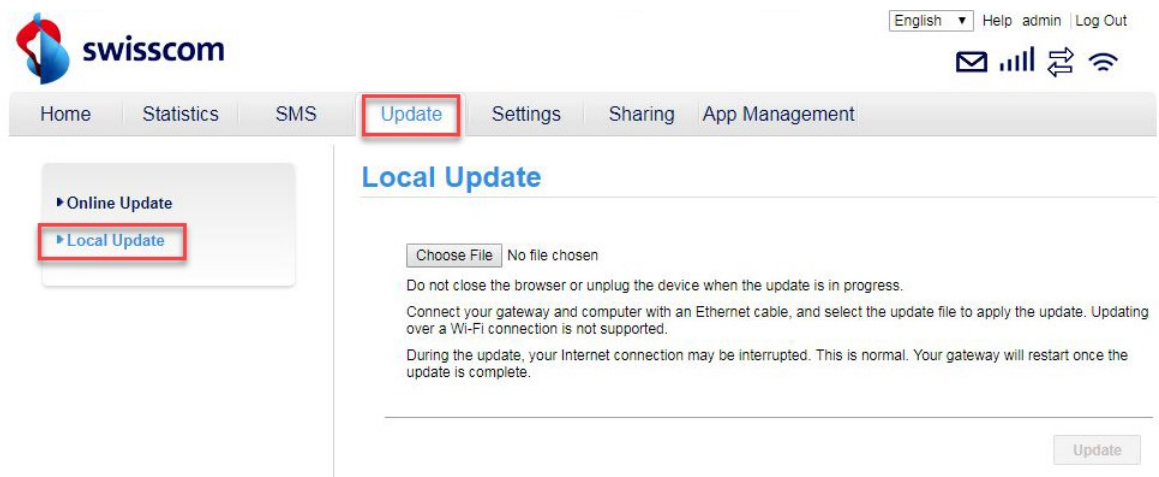
# Offline firmware update Huawei router B315s-22

## Step-by-step instructions

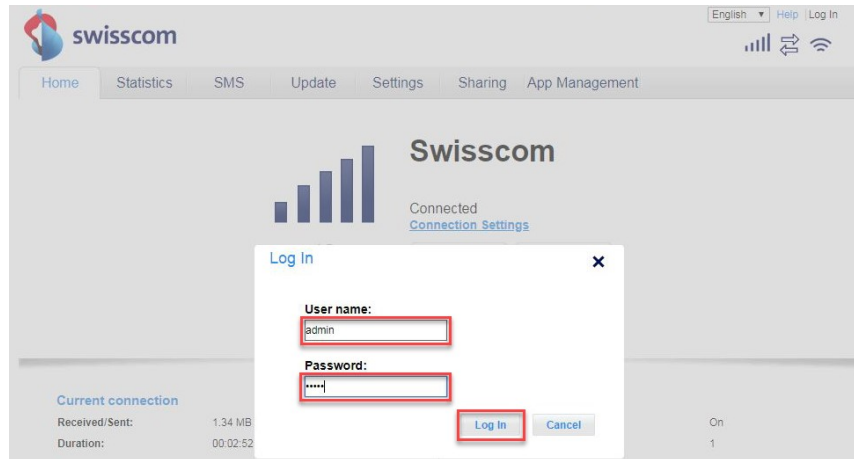
1. Make sure your laptop/computer is connected to the router via WLAN or Ethernet.
2. Open a browser (e.g. Internet Explorer or Google Chrome) and enter **http://192.168.1.1** in the address bar and confirm by pressing the Enter button. This will take you to the WebGUI for the router.



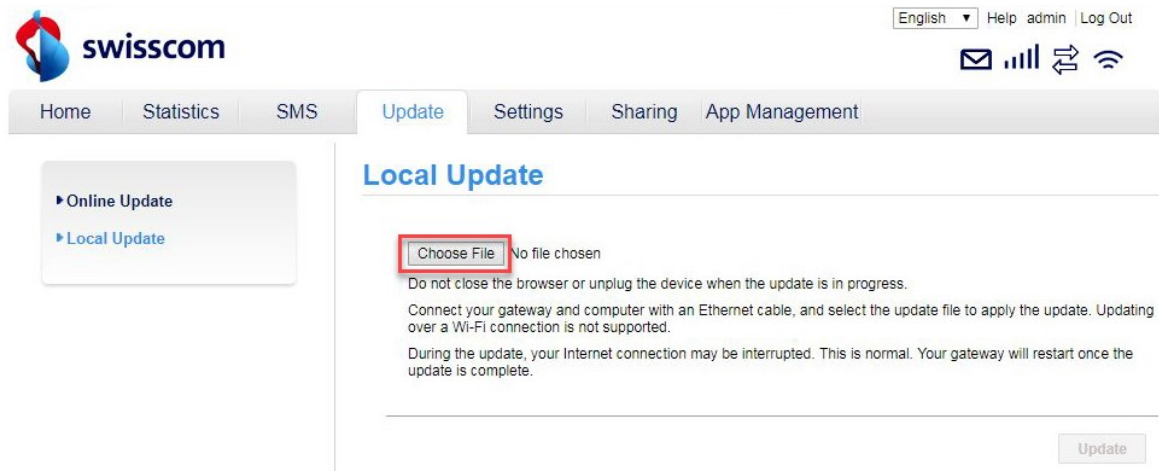
3. Click on the 'Update' button and then 'Local Update'.



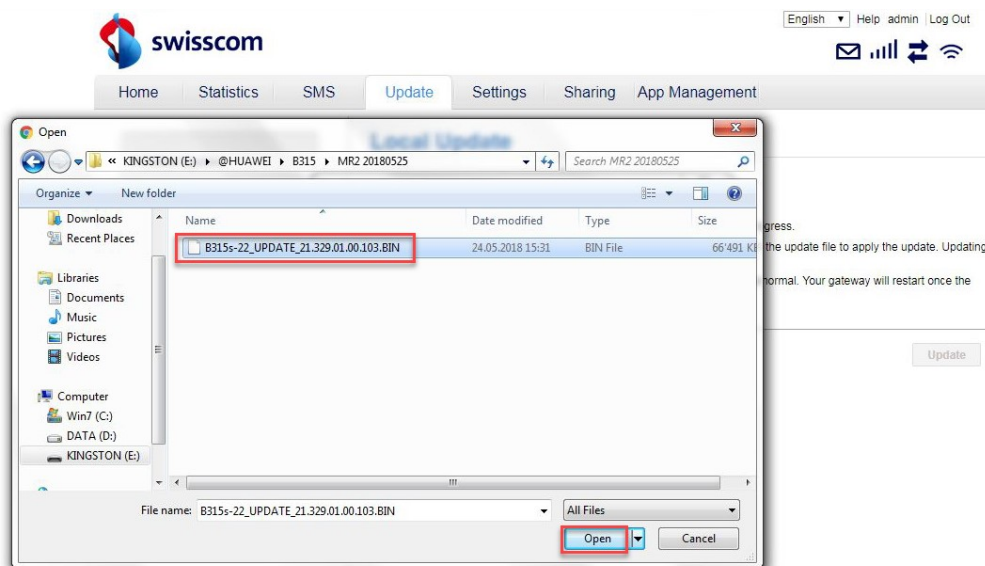
4. Log into the router with the user name (**admin**) and password.



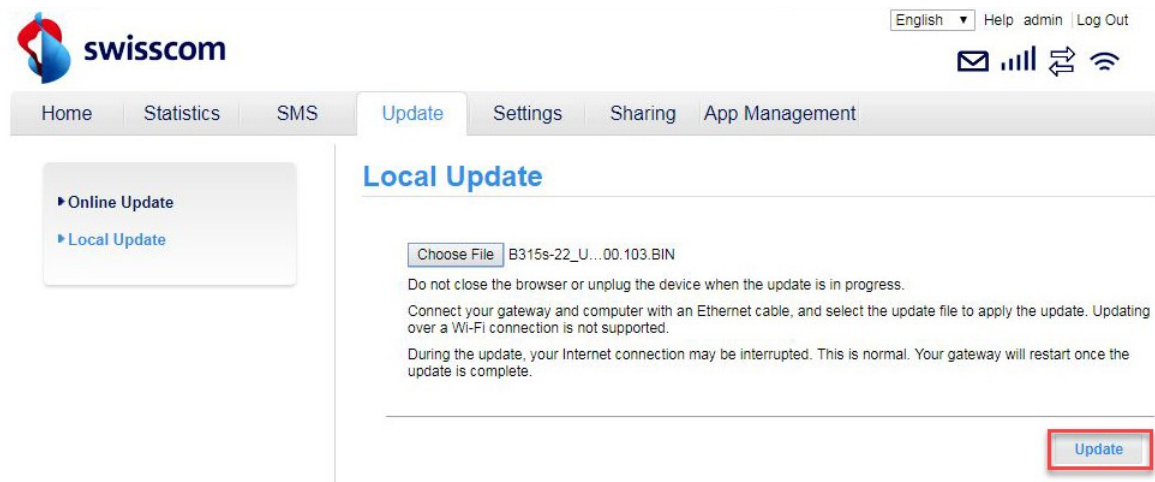
5. Click on 'Choose File'.



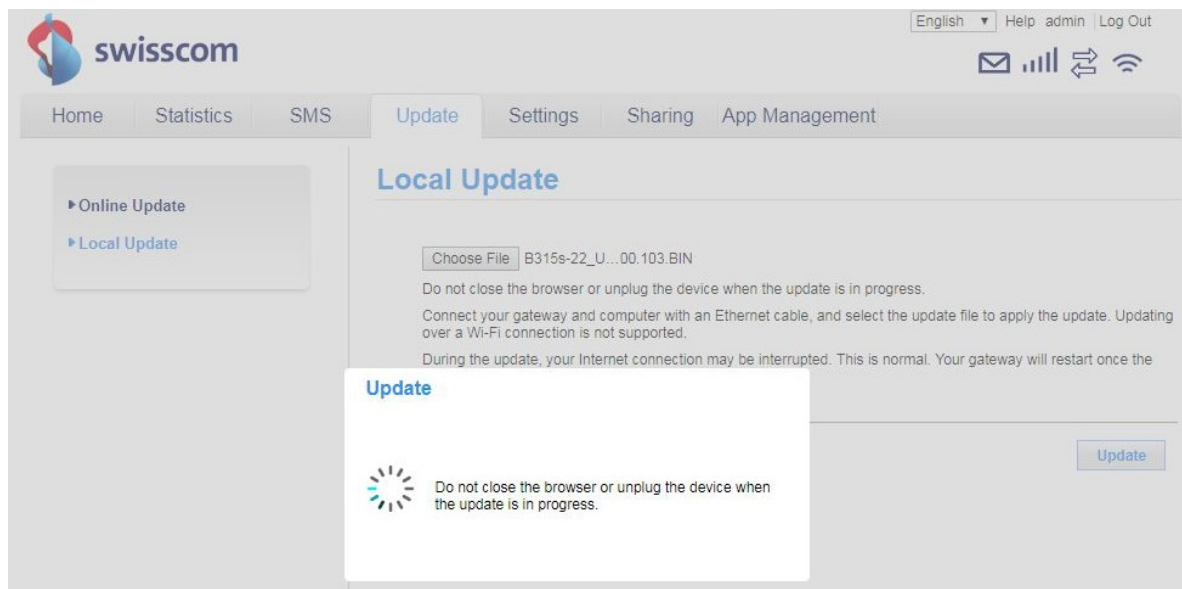
6. Navigate to the folder where you saved the firmware update file and select it.



7. Now click on **'Update'**.



8. The firmware will now be updated on your router. The process takes around 5 minutes. Then return to the main page of the WebGUI.



9. You can now use the router with the latest features and security update as normal.