

# Setting up your Internet-Box.



**Start** The package includes:

Internet-Box plus  
Power adapter  
DSL cable  
Ethernet cable  
2 microfilters

**1** Launch installation on receiving this SMS.

If you bought your Internet-Box without a new subscription, you will not receive an SMS.

**2** Remove your old Internet/telephony installations (if any).

You can return old devices to Swisscom for **recycling** free of charge. A return label is included on the delivery slip.

**3** Connect the power adapter.

**4** Connect a new microfilter.

Does your telephone socket look different? Do you have two ports on your phone socket, for example? See back for telephone wiring versions under «Other telephone sockets».

Use the Internet-Box as your **main memory**. Read overleaf how to do it in easy steps.



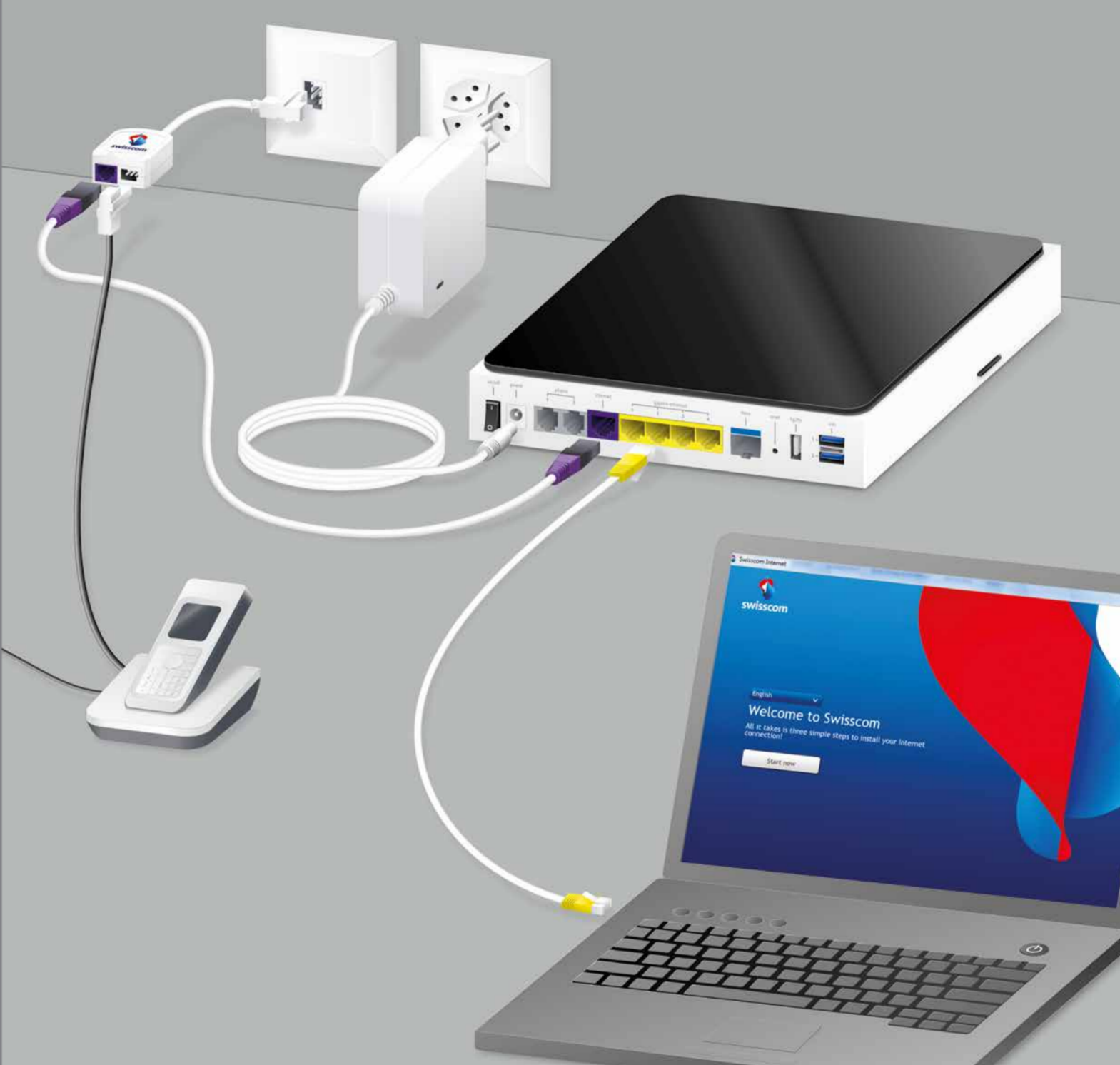
**12** Your Internet is set up and you can start surfing.

Connect your telephone.  
(This only applies if you are a fixed network subscriber.)

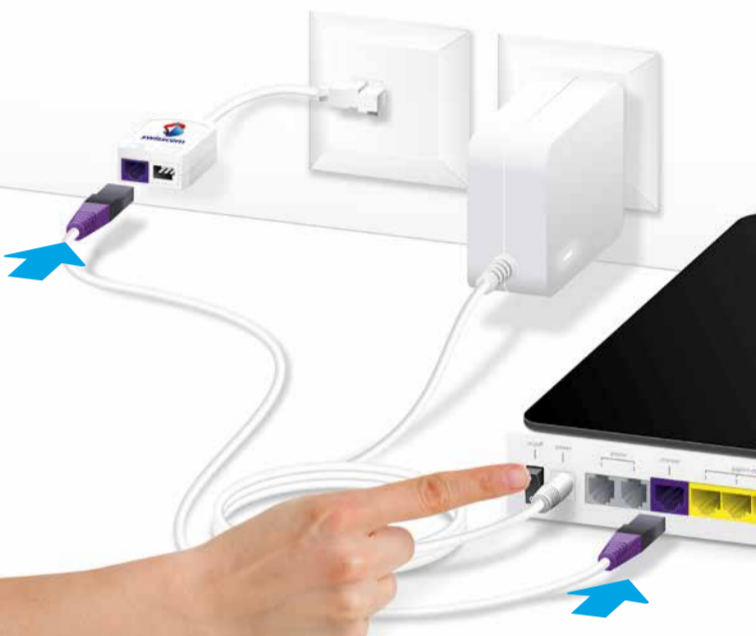


**11** Use a **new microfilter for every telephone socket in use** in your home (see back for exceptions).

## Installation overview



**5** Connect the DSL cable and switch on the Internet-Box.



**6** Select your language.



Select your language as soon as you are asked to do so. Navigate with the buttons **▲** and **▼** and confirm with the OK button **▶**.

Read your WLAN data.



See back for more details about WLAN.

Wait a few minutes until «Sucessfully connected» is displayed:



Confirm by pressing the OK button.

Connect your computer and open your Internet browser.



Use the **new Ethernet cable**. Open [www.bluewin.ch](http://www.bluewin.ch) in the Internet browser and complete all compulsory fields step by step. If you have no connection option for an Ethernet cable, please read the «Guest WLAN» section on the back.

**7** Wait 5 minutes.

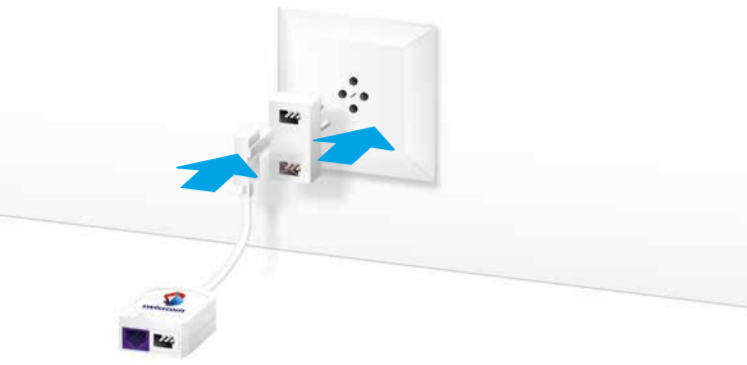


If the display still indicates «Initial Configuration?» > continue with step 8.  
If the display indicates «Successfully connected?» > continue with step 9.

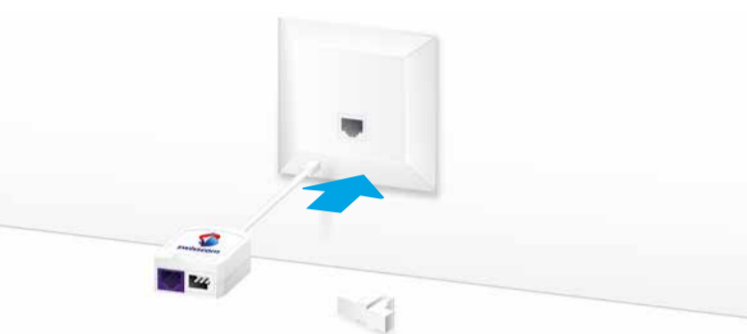
# Other telephone sockets

Please use a **new** microfilter for every telephone socket used in your home. You can obtain additional microfilters in the Swisscom Shop.  
**Exception:** If you have a digital socket as in Section c), you do not need a microfilter.

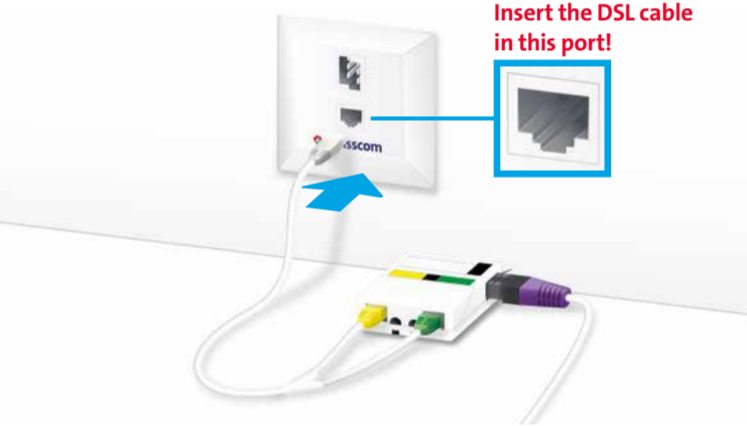
a) If you have a four-pin socket, please continue to use an adapter to connect the microfilter.



b) If you have a RJ45 telephone socket you must first remove the adapter from the microfilter.



c) Only if you have a digital socket do you not need a microfilter. Your splitter and the illustrated telephone socket perform these functions for all other telephone sockets in your home.



# WLAN

WLAN is a password-protected network offering wireless Internet access.

## Where do I find my WLAN name (SSID) and password?

You can read off your name and password on the Internet-Box display: Go to «WLAN» and then select «Show password».



## What is dual band WLAN?

Your Internet-Box features the latest generation of WLAN.



Two WLAN networks are provided for data transmission, so you benefit from improved speed. If your devices support both networks they will automatically connect to the faster of the two networks in the background.

## How do I change my WLAN password?

You can change it easily in Internet-Box settings. Read the section on «Internet-Box web portal» on this page.

# Guest WLAN

## How do I provide guests with WLAN?

The Internet-Box has an extra WLAN for your guests. You can activate the Guest WLAN over the display for 6 hours, 24 hours or permanently. Select «Guest WLAN» and then «Switch on».



**Note:** use the Guest WLAN temporarily during set-up (step 8) if your computer doesn't have an Ethernet connection. In this case please wait for 10 minutes until the Guest WLAN menu is displayed on the Internet-Box display. Then activate the Guest WLAN and connect your computer with this WLAN network.

For instructions on setting up WLAN on your computer and smartphone visit:  
[www.swisscom.ch/internetbox-wlan](http://www.swisscom.ch/internetbox-wlan)

# Main memory

The Internet-Box features a main memory function that is also known by the term «NAS». You can store documents, music, and photos centrally with the Internet-Box and access them from all devices in your network. This is particularly recommended if several persons or devices are to have access to the same files.

## Where do I save my content?

You can add an SD card to your Internet-Box. Insert the SD card in the designated slot. You can also connect a USB hard drive. Use the port marked «usb». All computers in the network can immediately access these memory slots, and store new data, view photos and play back videos and music.



**N.B.** Do not place the hard disk on the Internet-Box. Set the device as far away as possible from the Internet-Box to avoid interference.

## How do I access my main memory?

**Windows:**  
To access the main memory enter \\internetbox-nas in your **Windows Explorer**. You can easily create a link on your desktop. Click with the mouse cursor on the displayed folder and pull it onto the desktop. You can then save the required content in this folder.



**Mac:**  
If you have a Mac, you can find the «INTERNETBOX-NAS» folder in the «Finder» under «Share». When requested to do so, log in as «guest» and then save the required content to this folder.

## Who has access to my data?

All devices connected to your network per cable or wirelessly can access your data on the main memory. Devices logged in via the Guest WLAN have no access to your main memory.

## Access per app also on the move

You can also access data on the main memory when you are not at home over your smartphone or tablet PC. Download the Internet-Box app in your App Store to do so.

For more details about the main memory function visit:  
[www.swisscom.ch/internetbox-nas](http://www.swisscom.ch/internetbox-nas)

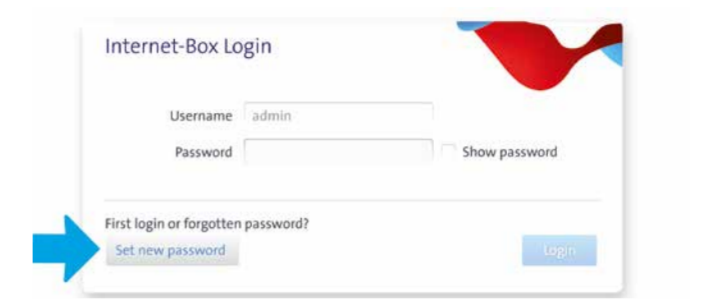
# Internet-Box web portal

You can access your password-protected **Internet-Box settings** on the web portal using your Internet browser. Discover everything your Internet-Box can do, and change settings to suit your needs.

## How do I log in?

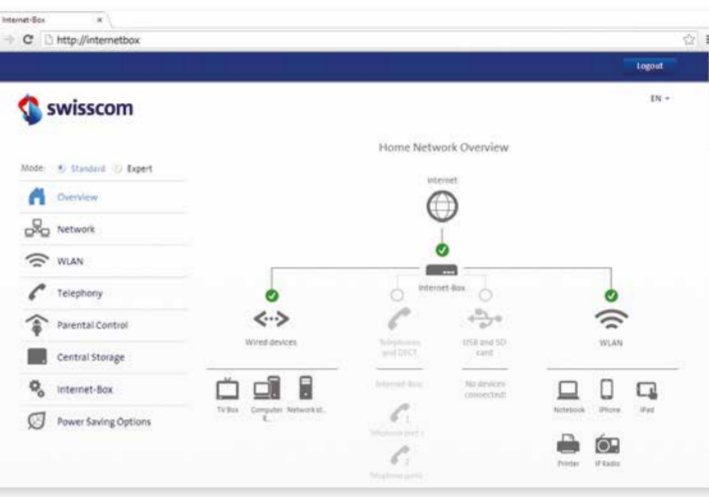
Enter <http://internetbox> or [192.168.1.1](http://192.168.1.1) in your Internet browser. Click **«Set new password»** to log in for the first time, or if you have forgotten your password. You can set or change your personal password.

Write down your Internet-Box-password.



If you are already a customer, you can log in with your existing password or set a new one.

## What can I do in the web portal?



You can change settings on the following items:

- > WLAN and guest WLAN
- > parental control (Internet access times per device)
- > main memory
- > power saving options
- > network settings

## How do I change my WLAN name and password?

Click the «WLAN» menu item and change your WLAN access data as you like.

For more details about your Internet-Box settings and other information enter:  
<http://internetbox> or [192.168.1.1](http://192.168.1.1)

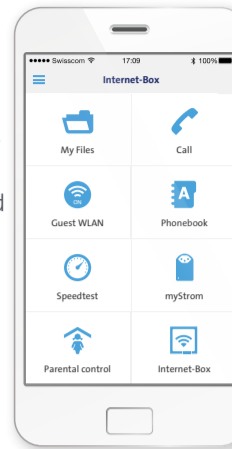
# Internet-Box app

With the Internet-Box app you can access data in the main memory over your smartphone or tablet PC anywhere.

Connected to the WLAN at home you can use other practical functions:  
> set WLAN power-on times  
> activate Guest WLAN  
> manage parental control function  
> transfer contacts from your smartphone to your main address book  
> speed test to measure Internet and WLAN speed

You can also use the app to make calls.

Download the app from your App Store under the heading «Internet-Box».

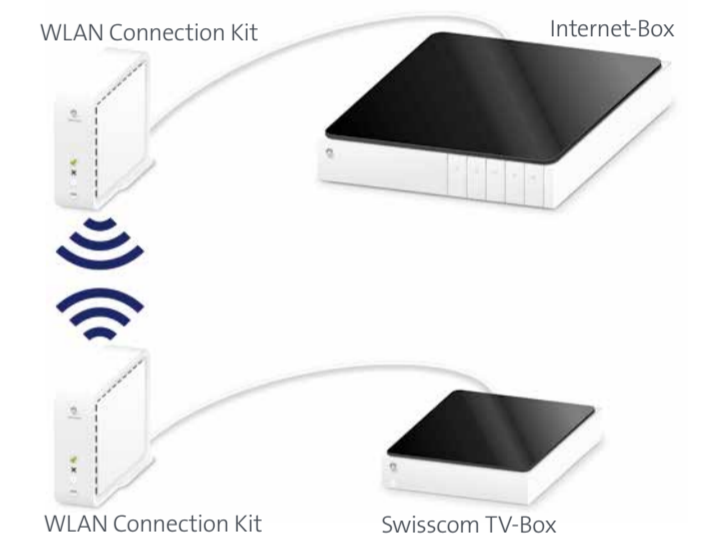


# Swisscom TV

(if you are a Swisscom TV subscriber)

**Connect your TV-Box according to the Swisscom TV instructions.** We recommend, using the Ethernet cable for the set-up.

You can also set up the TV-Box wirelessly with a connection kit.



For more details visit:  
[www.swisscom.ch/internetbox-tv](http://www.swisscom.ch/internetbox-tv)

# Safety instructions

- > Place the Internet-Box in a well-ventilated area to avoid overheating.
- > Only operate the device in ambient temperatures of 0°C to +35°C, and shield it from direct sunlight.
- > On no account cover or block the Internet-Box vents.
- > Set the device upright on a level surface, or mount it on a wall with two screws.
- > Never stack other devices on the Internet-Box.
- > Best WLAN coverage is ensured by observing a minimum distance of 20 cm to other devices.
- > Do not allow any liquid to get into the device. So when cleaning it please only use a slightly damp cloth.
- > More details can be found on the product safety sheet included in the package.

Install the free **My Swisscom Assistant** on your computer. This help programme for Internet, WLAN and e-mail assists you with set-up and any problems that may arise. More info and download at [www.swisscom.ch/msa](http://www.swisscom.ch/msa)

For more telephony information go to:  
[www.swisscom.ch/internetbox-tel](http://www.swisscom.ch/internetbox-tel)