

Gigaset SL360HS setup

Supplement to Gigaset User Guide

(Deutsch auf der Rückseite)



www.swisscom.ch/hdphones-help

Swisscom (Switzerland) Ltd.
Contact Center
CH-3050 Bern

www.swisscom.ch
0800 800 800

KKD+JM (PMK-UID) 03/2017 EN

Additional Information

Phonebook

The Gigaset SL360HS gives you the option to save contacts under «Base Directory» or «Handset Directory». It's easy to **switch to the other phonebook**:
Menu > Phonebook > Base Directory/Handset Directory > OK

The **Handset Directory** is saved **locally** and is only on this handset.

With inOne home (Internet-Box)

The **Base Directory** is saved in the **central Internet-Box phonebook**. All the Swisscom HD-Phones you use at home can access the central phonebook.

Transfer your smartphone contacts easily to the Base Directory.

The Home app lets you transfer your smartphone contacts to the central Internet-Box phonebook at the touch of a button.

You can edit the **contacts** in the central phonebook (Base Directory) easily in the Internet-Box web portal at <http://internetbox>

You can find additional information at www.swisscom.ch/internetbox-phonebook

Before replacing the Internet-Box or a reset save the settings at:

Internet-Box plus/standard:

<http://internetbox> > Settings > Save configurations

Internet-Box light:

<http://internetbox> > Advanced > Save current configuration

With inOne KMU office (Centro Business 2.0)

The **central subscriber directory** for your company is available automatically under **Base Directory**.

You can maintain these contacts in the Customer Center at www.swisscom.ch/login > Business Telephony > My Telephone Numbers

The **call list** is automatically matched with the Customer Center.

Conformity



Gigaset Communications GmbH confirms that the Gigaset SL360HS radio terminal system meets the 2014/53/EU guidelines.

The conformity declaration is available on the following website: www.swisscom.ch/hdphones-help

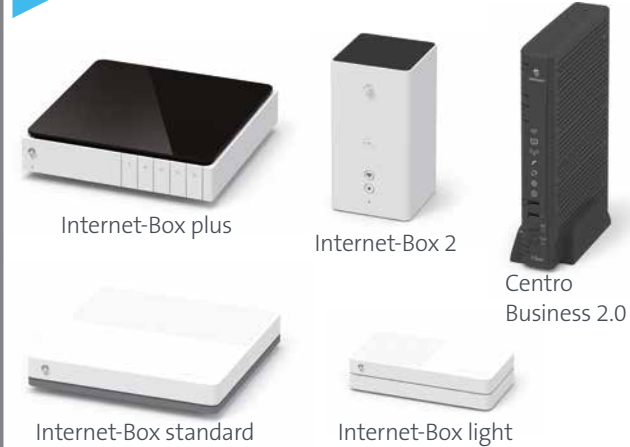
Start

You have received:



1

You have one of these routers:



Your router must be installed and switched on.

2

Insert the batteries and close the compartment.



3

Select your language.



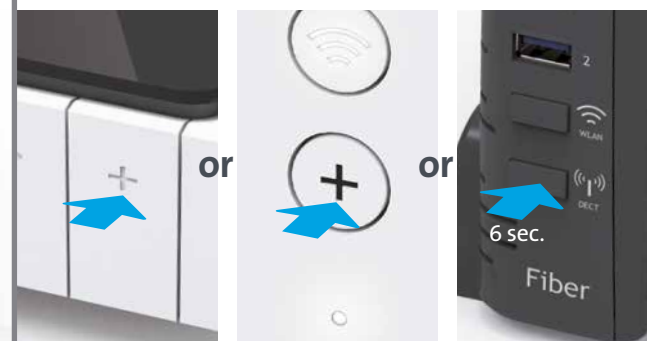
4

Take your Gigaset SL360HS and go to the place your router is installed.



5

Press the + button on your router.



Wait for the HD-Phone to connect.

If connection is not successful, press «Register» on the Gigaset and then the connection button on your router.

Installation overview



7



You have now set up your Gigaset SL360HS.

6

Connect the adapter to the power socket of your choice.



When you first set it up, we recommend fully charging the telephone until the display icon is no longer visible.