

Swisscom (Schweiz) AG
Contact Center
CH-3050 Bern

www.swisscom.ch

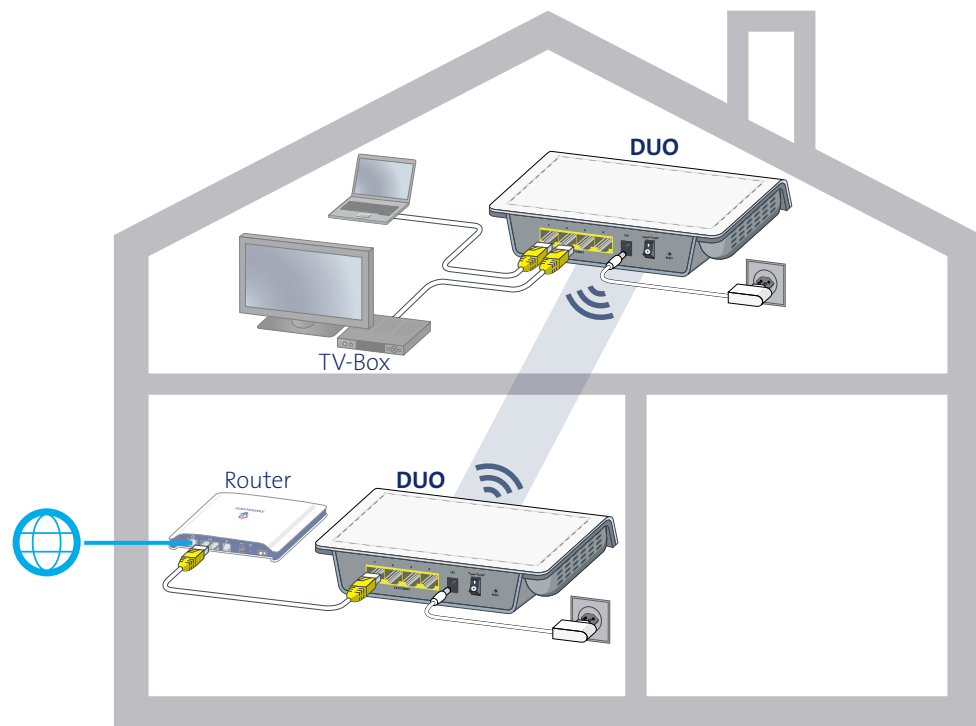
YM.AP.4641.UM.SW.D06

11/2012

Universal Verbindungs-Kit einrichten	S. 2
Installer le Kit de Connexion Universel	p. 8
Installare il Kit di Connessione Universale	p. 14
Install the Universal Connection Kit	p. 20

DUO

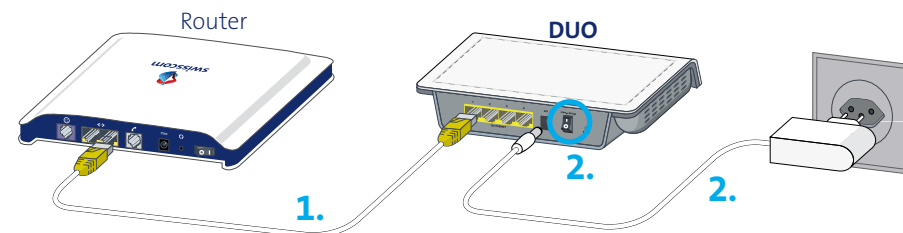
Example installation



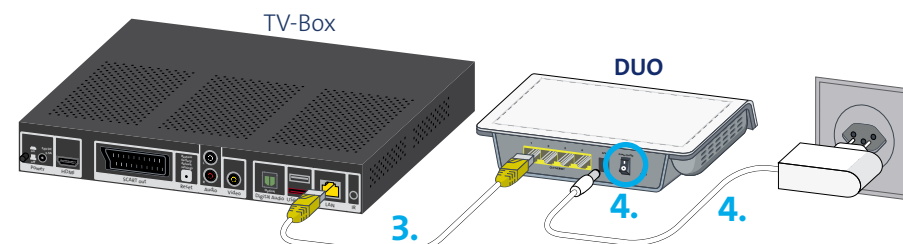
Thanks to the **Universal Connection Kit wireless DUO**, you can connect up to **four devices** to the Internet via Ethernet connection (for example a Swisscom TV-Box, a computer or a game console) in a different room to that which contains the router.

Transmission between the two Universal Connection Kit devices takes place wirelessly, replacing the need to run a long network cable between the two rooms.

Setting up the Universal Connection Kit DUO



1. The Universal Connection Kit DUO consists of **two devices that are exactly the same**. Position **one DUO device next to your router** and connect the two using the enclosed Ethernet cable (yellow plug).
2. Connect the DUO device to the mains and press the power switch.



3. Now, position the second DUO device next to the device that you would like to connect to the Internet (in this example, the Swisscom TV-Box) and plug in the Ethernet cable (yellow plug).
4. Connect the DUO device to the mains and press the power switch.
5. The two DUO devices will automatically connect with each other. **This process will take five minutes.** Once the connection LEDs (✓) on both devices stop flashing and light up green, the connection has been established and the TV-Box is connected to the Internet.

Note: If the connection LEDs do not light up green after five minutes, please consult the chapter entitled «Troubleshooting» (page 24).

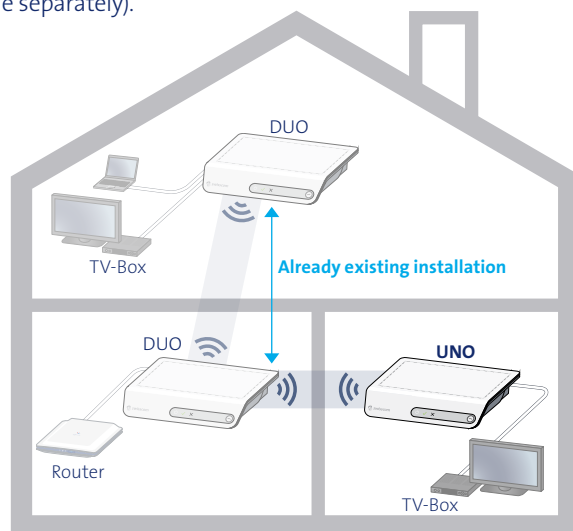


Expansions (optional)

The Universal Connection Kit DUO can be expanded in the following situations using the **Universal Connection Kit UNO** (available separately).

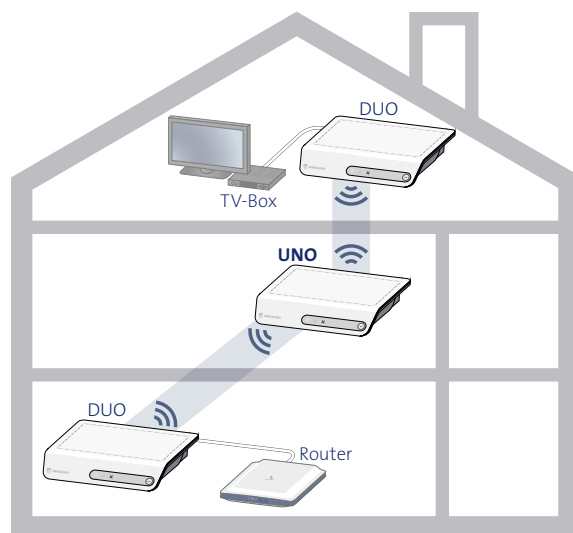
Connecting to the Internet in an additional room

If you would like to link up devices in another room via Ethernet connection (for example a TV-Box, computer or game console), you can set up an additional Connection Kit UNO.



Improving a poor connection/range

If the distance between the two DUO devices is too large and there is not an optimal connection or no connection at all, you can improve the connection by placing an additional Connection Kit UNO in between the two devices.



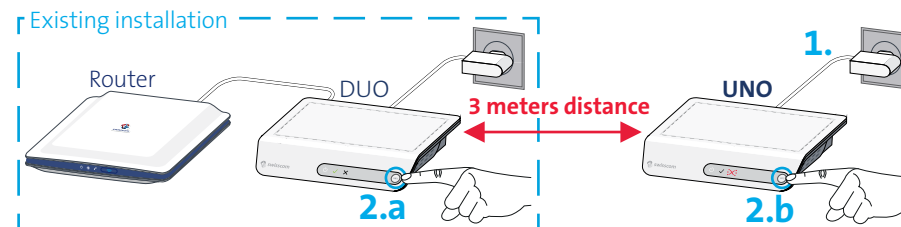
Universal Connection Kit wireless UNO


Available in the Swisscom Shop or at www.swisscom.ch

Setting up an additional Universal Connection Kit UNO (optional)

Preparation: Connecting the new Connection Kit UNO

1. In the room in which the router is located, connect the UNO device to the mains and position it at a distance of **three metres** from the existing DUO device. Wait **two minutes** until the device **flashes**. 



2. **2.a** Press the **WPS button** (WPS) on the existing DUO device (next to the router) and then on the new UNO device a few seconds later (**2.b**). The connection LEDs (✓) start to flash and the devices connect automatically. This process will take five minutes. The connection has been established once the ✓ lights up green. 

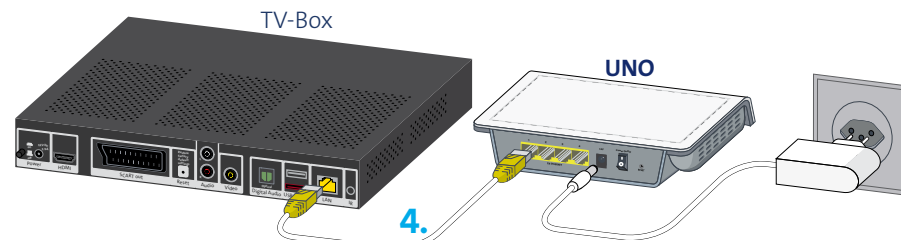
Note: If the connection LED on the UNO device does not light up green within five minutes, please repeat step 2.

Setting up the Connection Kit UNO in the room of your choice

3. The UNO device can now be unplugged and placed in the room of your choice. The connection will be established automatically. **This process will take up to five minutes.** 

Note: If the connection LED does not light up green within five minutes, please consult the chapter entitled «Troubleshooting» (page 24).

4. If necessary, connect your devices (in this example, the TV-Box) to the UNO device using the Ethernet cable (yellow plug).



Troubleshooting

Power indicators



White: Device is switched on



Flashing white: Software update in progress > **please wait**



Off: Device is switched off or is not connected to the mains

Connection LED



Flashing green: Connection is being established > **please wait**



Green: Good connection



Red: Poor connection (for example jerky TV image)

The devices are connected to each other, but the distance between them is too large. Please carry out one of the following measures:

- > Reduce the distance between the devices by repositioning them.
- > Use another Connection Kit UNO to improve the strength of the connection (page 22).



Flashing red: No connection to the destination device

Please carry out one of the following measures:

- > Reduce the distance between the devices by repositioning them.
- > Connect the devices by pressing the WPS button (page 23, steps 1. – 2.).
- > Use another Connection Kit UNO to improve the strength of the connection (page 22).

Usage and safety instructions

- > Install the Connection Kit in accordance with these instructions.
- > Do not block any air vents.
- > Maintain a minimum distance of 1 metre between the DUO Kit and the DSL router.
- > Do not place the devices directly on the ground.
- > Do not shut away the devices in a cupboard or similar enclosure.
- > Position the devices such that they are at least 15 cm from walls.
- > Do not position the devices in the corner of a room.
- > Do not position the devices near Bluetooth devices or a microwave oven.