



Channel lists facilitate selection

You can set up channel lists, i.e. hide and display channels and change the channel sequence.

>  button >  in the menu at top left

> TV settings > TV channel lists > **Create channel lists**

Tip: adjusting the channel lists is simpler in the customer center: www.swisscom.ch/login > Swisscom TV


> Manage TV channels > **Create new channel list**

You can then select your channel list using the **Option** button in the TV Guide.

Swisscom TV on any device – even when you are on the move

With Swisscom's free **TV Air** app, you can watch Live TV, Replay programmes and recordings* on your **smartphone or tablet**. Browse through the TV listings while out and about and save the interesting stuff for later.

Further information is available at www.swisscom.ch/apps

Tip: programmes with  can be downloaded and watched later without an internet connection.

And on your **computer**: <http://tvair.swisscom.ch>

View your holiday snaps on your television

With Swisscom TV, you can now even view your photos on your television set.

> Set up a free account at www.mycloud.ch

> Select «Connect to TV» in the top right-hand corner below your initials and follow the on-screen instructions.

The photos you have saved on myCloud can now be viewed on your television:

>  button > **Apps** > 

Swisscom (Switzerland) Ltd.
Contact Center
CH-3050 Bern

www.swisscom.ch
0800 800 800

Swisscom TV Entertainment OS3

Using Swisscom TV



Replay – we stop time for you

Replay* allows you to view and record TV programmes on the available channels up to seven days after they have been broadcast. Activate Replay at:

>  button >  in the menu at top left

> TV settings >  **Replay** > **activate**

Apps – aren't just on smartphones

Apps is an open platform for integrated partners. YouTube, myCloud, and Redbull are already installed on your Swisscom TV, and so are many others. Take a look and try out the apps.

>  button > **Apps**

Search

You can type in search  terms:

> **Option** button > OK > Type the search term

* Availability and coverage may vary depending on your subscription.

Important features

Further tips are available at www.swisscom.ch/TVremote

During a programme*

Skip back 10 seconds: ⏮

Pause and continue watching a programme: ⏸

Skip forward 30 seconds: ⏭

Information on the current programme: OK

In a menu

Navigating via the menu: ring

Press to confirm: OK

Return to previous step – briefly press once: ⏮ Back

Return to the current programme – press once and hold: ⏮ Back

Sound off

Changing channels

Switching between the last two channels – briefly press once: ⏮

Call up a list of the last watched content – press and hold once: ⏮

Switching between channels: ⏮

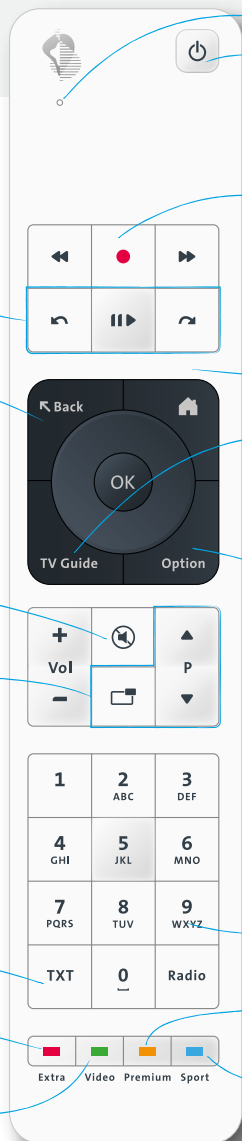
Teletext

Extra

Discover something bigger than Teletext – HbbTV, interactive TV.

Video

The video library in your own home – rent and buy films and series.



LED

On/off

Recordings*

(even Replay programmes)

Record programme – briefly press once: ●

Record series – briefly press twice: ●●

Watch recordings – press once and hold: ●●●

TV Guide

Get a quick overview of the TV listings. See what's on TV and when, record interesting programmes* or launch Live and Replay* programmes.

Tip: Skip back / forward 24 hours ⏮ ⏭.

Option

This button provides you with useful information, viewing and filter options, for example select second language, subtitles or channel list – give it a try!

Radio

Premium

Immerse yourself in the world of Teleclub – a summary of which can be found here.

Sport

Live – this takes you directly to our large sports offering.

Only one remote control

TV on/off switch – changing the TV volume

Activate the function here:

> Home button > ⚙ in the menu at top left

> General settings > **Connect remote control**

Start screen

> You'll find the TV settings at top left under ⚙

> Browse through the themes and arrange them the way you want.

> Go to your last saved programmes.

> See what's on at the moment on your favourite channels.

> Discover some exciting tips and apps.

Tip: You can launch programmes directly: ⏮

Tip: flipping pages gets you where you want to be more quickly:

> ⏮ and ⏭

You can flip pages on the start screen, in the TV Guide and in other lists.

* Availability and coverage may vary depending on your subscription.