

VTech HD10



vtech® Quick Start Guide

Start

You have received:



VTech HD10 handset

Charging cradle with power adapter

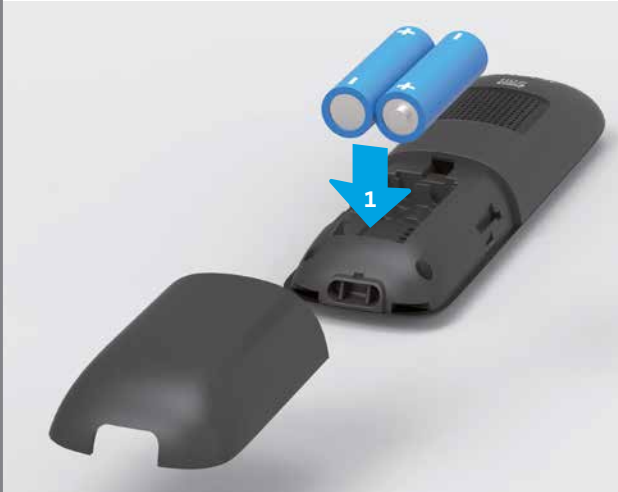
1

Your Internet-Box must be installed and switched on.



2

Insert the batteries and close the compartment.



Installation overview



3

Select your language.



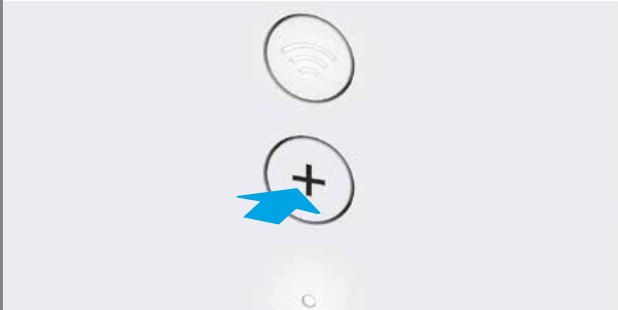
4

Take your handset and go to the place your Internet-Box is installed.



5

Press the connection button on your Internet-Box.



Wait for the handset to connect.

If the connection has failed, repeat steps 4–5.
You can find the registration mode of the handset under:
> OK > Settings > Advanced settings > Connection
> Connect > OK

7

Easily transfer your smartphone contacts to your handset. Please refer to the «**Phonebook**» section on the back page.



You have now set up your VTech HD10.

6

Connect the adapter to the power socket of your choice.



We recommend you to charge your handset for at least 15 hours once you have set it up.



Designed to fit your home.
And your life.

VTech Telecommunications Ltd.
A member of THE VTECH GROUP OF COMPANIES.
Specifications are subject to change without notice.
© 2017 for VTech Telecommunications Ltd.
All rights reserved. Version 3 08/17.

KKD+JM (PMK-UID) 08/2017 EN

