

# VTech HD10



## vtech® Quick Start Guide

Start

You have received:



VTech HD10 handset

Charging cradle with power adapter

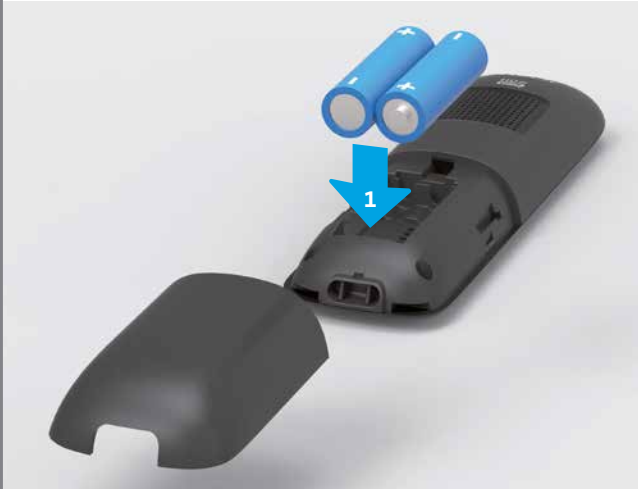
1

Your Internet-Box must be installed and switched on.



2

Insert the batteries and close the compartment.



### Installation overview



3

Select your language.



4

Take your handset and go to the place your Internet-Box is installed.



5

Press the connection button on your Internet-Box.



**Wait for the handset to connect.**  
If the connection has failed, repeat steps 4–5.  
You can find the registration mode of the handset under:  
> OK > Settings > Advanced settings > Connection  
> Connect > OK

7

Easily transfer your smartphone contacts to your handset. Please refer to the «**Phonebook**» section on the back page.



You have now set up your VTech HD10.

6

Connect the adapter to the power socket of your choice.



We recommend you to charge your handset for at least 15 hours once you have set it up.

**V** Designed to fit your home.  
And your life.

VTech Telecommunications Ltd.  
A member of THE VTECH GROUP OF COMPANIES.  
Specifications are subject to change without notice.  
© 2017 for VTech Telecommunications Ltd.  
All rights reserved. Version 2 04/17.

KKD+JM (PMK-UID) 04/2017 EN

