



Security radio networks



swisscom

# ALTRAVIS – Alarm Tracking and Visualisation

Swisscom Broadcast offers users of the POLYCOM Swiss security radio network a network management system that enables a comprehensive graphic display of the network status: ALTRAVIS is a unique, intelligent alarm tracking and visualisation system. It allows POLYCOM sub-network users to monitor the status of their network from any location at any time. ALTRAVIS collects all alarms from the sub-network and displays them on customer-specific maps with profile-controlled filtering. The user-friendly interface comprises editable maps at network, area and site level. All technical systems are displayed on the site map.

## Your benefits at a glance

### > Customised solution

ALTRAVIS maps your network with all technical systems at site level. The alarms can be filtered by profile (e.g. tactical and technical).

### > Flexibles System

The basic ALTRAVIS offering can be extended by different functions to suit your specific needs. Options such as integration into the ticketing system of Swisscom Broadcast's Network Management Center, alerts via SMS/e-mail or display on mobile devices can be selected flexibly.

### > Total control over costs and security

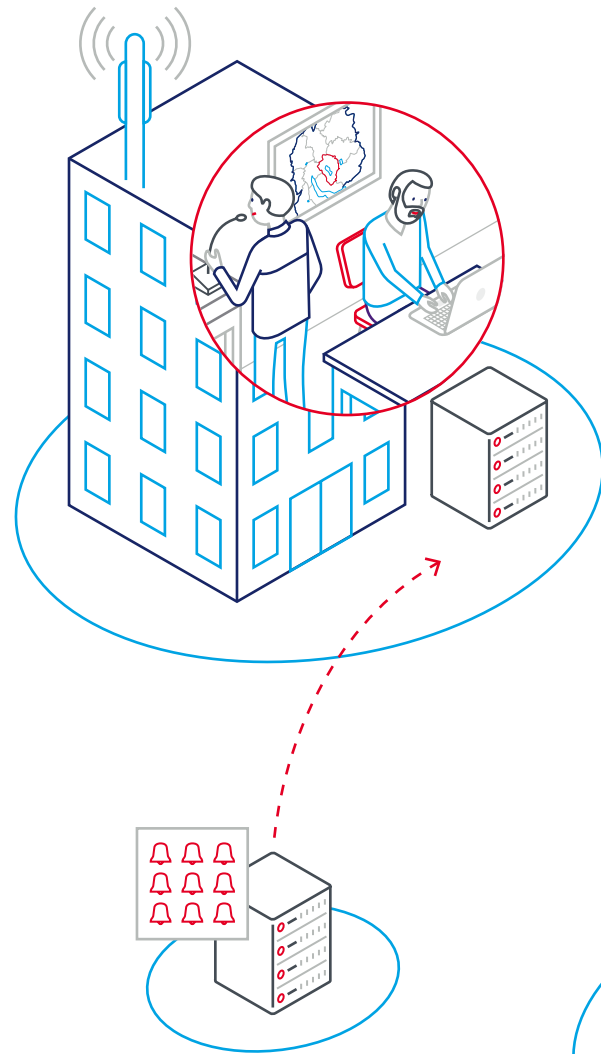
ALTRAVIS is also available as service package – offering convenience and full cost control.

You control security: by deciding which partners have access to your network and defining the nature and scope of information provided to selected user groups.

### > One partner for everything

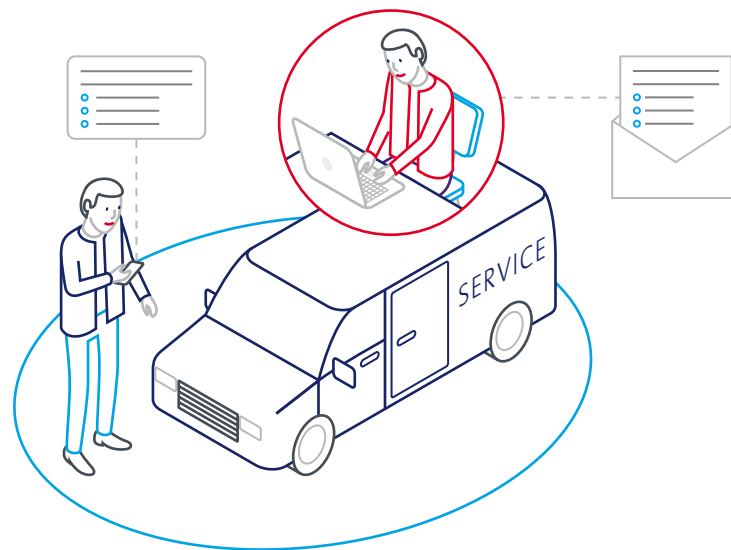
Swisscom Broadcast is your long-term partner. You receive a complete turn-key solution: we take care of installation, start-up, maintenance, support and software updates. You benefit from our highly specialised know-how and our many years of experience in planning, setting up and operating POLYCOM networks. We are the POLYCOM network maintenance partner for ten cantons and have network maintenance responsibility for the Swiss Border Guard (SBG).

# ALTRAVIS – always aware of the current network status



## Simplified technical operation

- > Active monitoring of network components and remote control of devices
- > Integration of maintenance plans and site documentation
- > Simple planning, configuration options, capacity management and proactive error prevention
- > Access for service partners
- > Rapid and traceable fault rectification with forwarding of alarms to Swisscom Broadcast's ticketing system
- > Measurement of Voltage Standing Wave Ratio (VSWR)



## Recipient-specific information

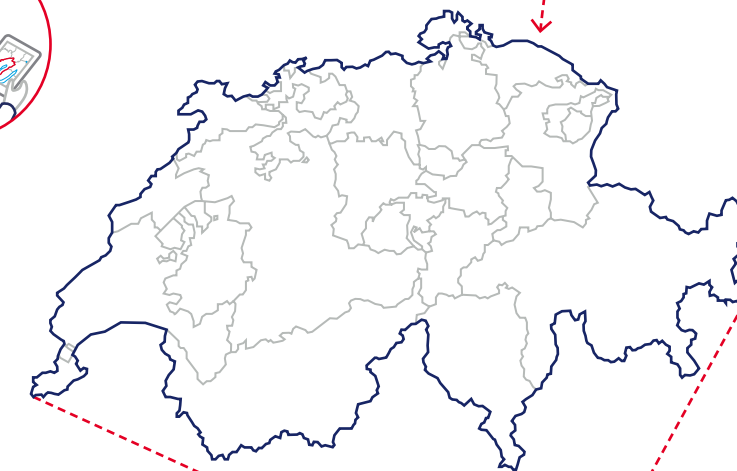
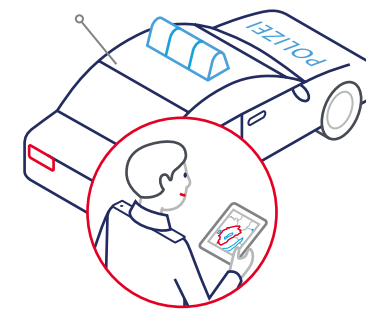
- > Selected alarms trigger e-mail or SMS notification
- > Triggers and recipient groups can be selected freely
- > Individual creation of alarm texts (alarm description, location, criticality, time etc.)

## Overview of all alarms

- > Compilation of all alarms for available systems and devices in the network
- > Alarms are forwarded to one central location thanks to the local server in the customer network

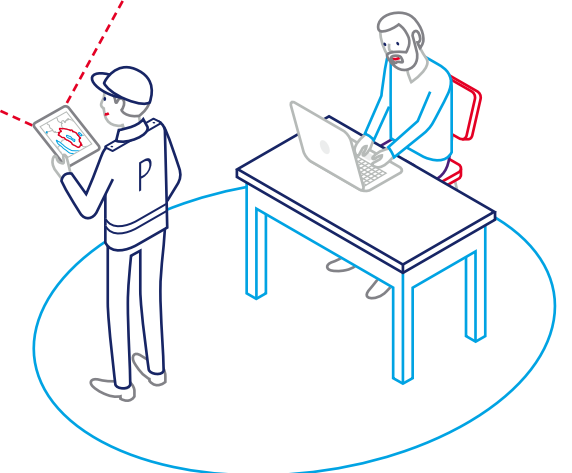
## High security guaranteed

- > Strong authentication (2-factor authentication) of access to the POLYCOM network that increases security at the gateway
- > Service partner login via VPN
- > Optional synchronisation with the Swisscom Broadcast server



## Network status visible anytime and anywhere

- > Updated graphic display of the entire network
- > Intuitive to use with hierarchical maps you can edit
- > Display on standard browsers and mobile devices
- > Alarms can be filtered by profile (e.g. tactical and technical) with role-specific, level-specific display



# Our experience with ALTRAVIS in the Swisscom Broadcast Network Management Center

As Switzerland's leader in the maintenance of POLYCOM systems, Swisscom Broadcast has also introduced and tested ALTRAVIS in its own Network Management Center (NMC).

ALTRAVIS has now significantly shortened the path from fault report to rectification. The NMC receives alarms from the monitored networks continuously and retains a clear overview, eliminating the need for periodic checking and acknowledgement. Fast alerts and new remote control options mean faults can be resolved more quickly and efficiently.

## **Less effort – better service quality**

ALTRAVIS networks us with our customers so we always have the same level of information and can react to faults as rapidly as possible. Our work processes are more efficient, and our customers enjoy improved service quality.

Interested in your own ALTRAVIS solution?  
We will be happy to advise you.



## Your contact person

### **Josef Künz**

Head of Product Line Public Safety Communication

E-mail      josef.kuenz@swisscom.com

Telephone   058 221 41 59

Mobile      079 447 89 28

Swisscom Broadcast Ltd  
Ostermundigenstrasse 99 | 3050 Bern

[swisscom.ch/polycom](http://swisscom.ch/polycom)