



XGS-PON bei BBCS

Brief description of XGS-PON as part of BBCS

swisscom

C1 - Public



XGS PON – The next generation access technology

Introducing XGS-PON as a further connection technology at BBCS

Even if bandwidths of up to 1 Gbps still cover the needs of Internet users for a longer period of time than enough, Swisscom is already working on the next technology step. With XGS-PON, Swisscom meets the future requirements for more bandwidth and also for the rollout outside the big cities. On the one hand, the XGS-PON technology can be integrated in today's FTTH area with its point-to-point architecture, but on the other hand, the technology can also be optimally retrofitted in regions with FTTS or FTTB. This clears the way for bandwidths of up to 10 Gbps outside the big cities.

On 1 December 2019, XGS-PON became available as a new connection technology at BBCS for your services. In addition, additional speed profiles expanded the range up to 10 Gbps.

From 1 November 2020, all BBCS providers will be automatically unlocked for the XGS-PON technology.





Qualification

XGS-PON access qualification



WSG Service Fulfillment

WSG SAQ with Fiber

Response BBType "Fiber"

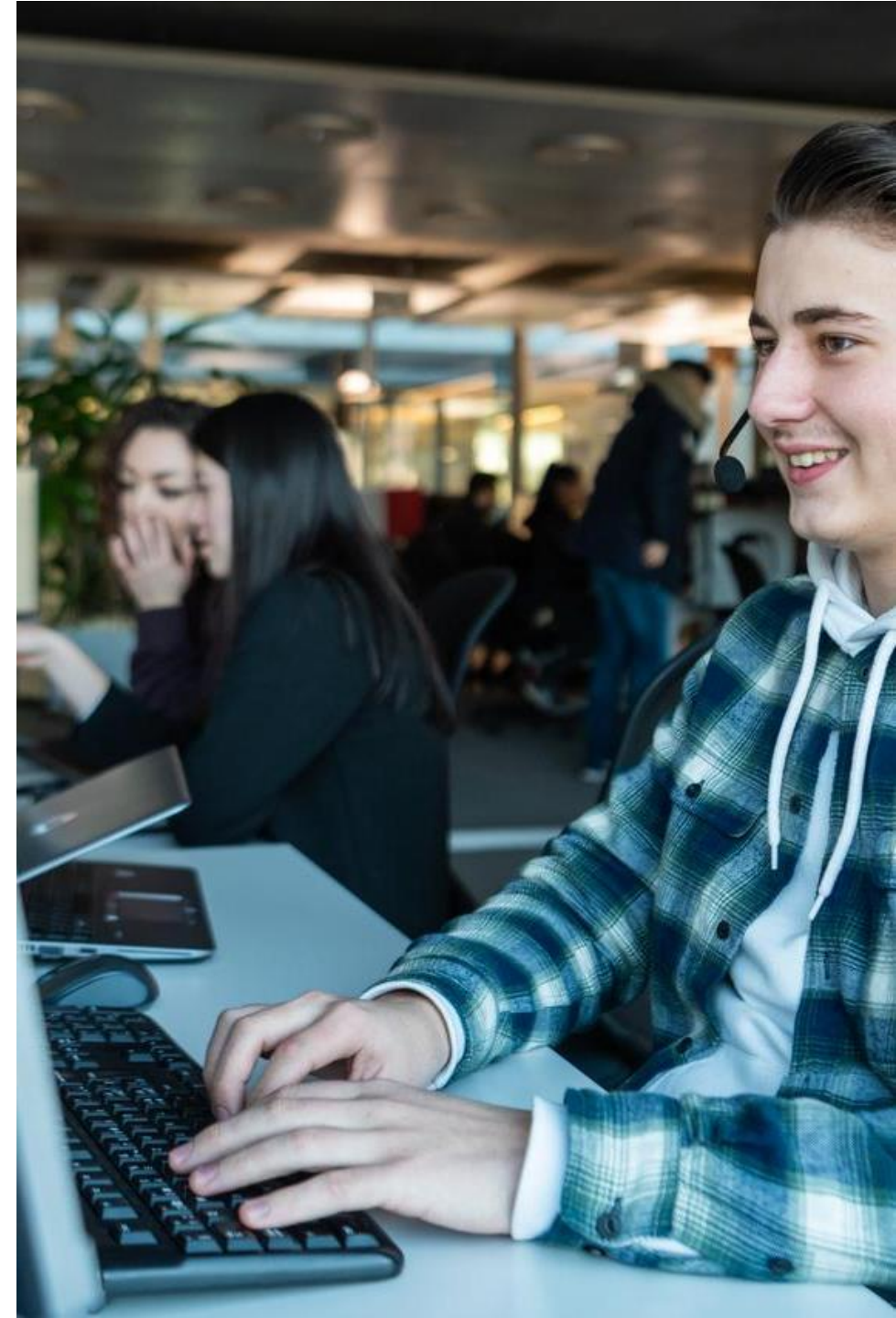
Until now, WSG only knew the BX technology at Fiber.

For a service Availability Qualification (SAQ), the response always included the value "BX" in BBType if fiber was possible at the requested address.

With the introduction of XGS-PON, this changed.

Service Availability Qualification Result	
back	
Request	
ISP	100036 Sunrise Communications AG (R)
Contr Element	BBCS_F (Fiber)
BB Type	BX
Street	Bachmattenweg

List of Sockets	
BX	<input type="checkbox"/> Socket Id B.101.341.3
	Cooperation Id
	First Inhouse Installation -
	Flat Id 05.01 = 5th
	Flat Memo -
	Plug Nr 1
	<input type="checkbox"/> Comment -
List of Building Entry Points	
	<input type="checkbox"/> Location Id (BEP)
	Street
	House Nr
	Building
	ZIP
	City





WSG Service Fulfillment

WSG SAQ with Fiber

As mentioned in the Product Info of October 2019, buildings can now also be accessed with XGS-PON technology. There are buildings that still have only BX, those that only have XGS-PON and those in which both technologies are available.

Therefore, since November 2019, the value "Fiber" is returned in BBType if Fiber Lines are possible (BX and/or XGS-PON)

The fiber technologies that are possible in a building can be seen under "Available Technology" and a plan date if a technology is planned.

However, the concretely available technologies on a specific OTO/utilization unit are only provided with the service qualification.

Service Availability Qualification Result

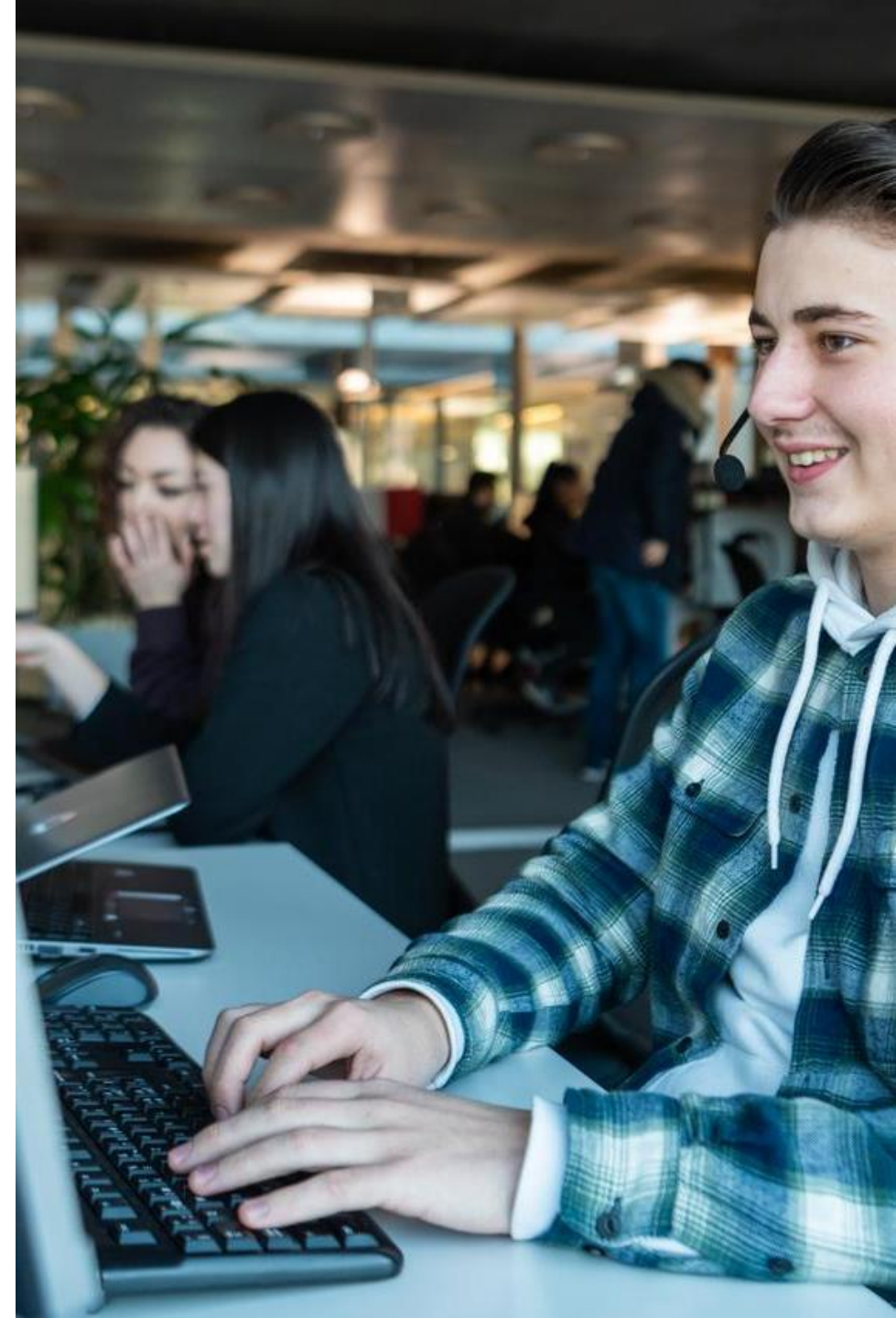
[back](#)

Request

ISP	100036 Sunrise Communications AG (R)
Contr Element	BBCS_F (Fiber)
BB Type	BX
Street	Bachmannstr.

<input type="checkbox"/>	Socket Id	B.101.
	Cooperation Id	
	First Inhouse Installation	-
	Flat Id	01.02.
	Flat Memo	-
	Plug Nr	2
<input checked="" type="checkbox"/>	Socket Id	B.101.
	Cooperation Id	
	First Inhouse Installation	-
	Flat Id	01.02.

<input checked="" type="checkbox"/>	Location Id (BEP)	64379941	BEP
	Street	St. Johannstr.	Avail
	House Nr	16	Avail
	Building	-	In Hc
	ZIP	850000	Max.
	City	Frauenfeld	BEP
	Available Technology	BB Type	Planned Date
		BX	05/11/2019
		XGS-PON	01/11/2019





Ordering

XGS-PON order process

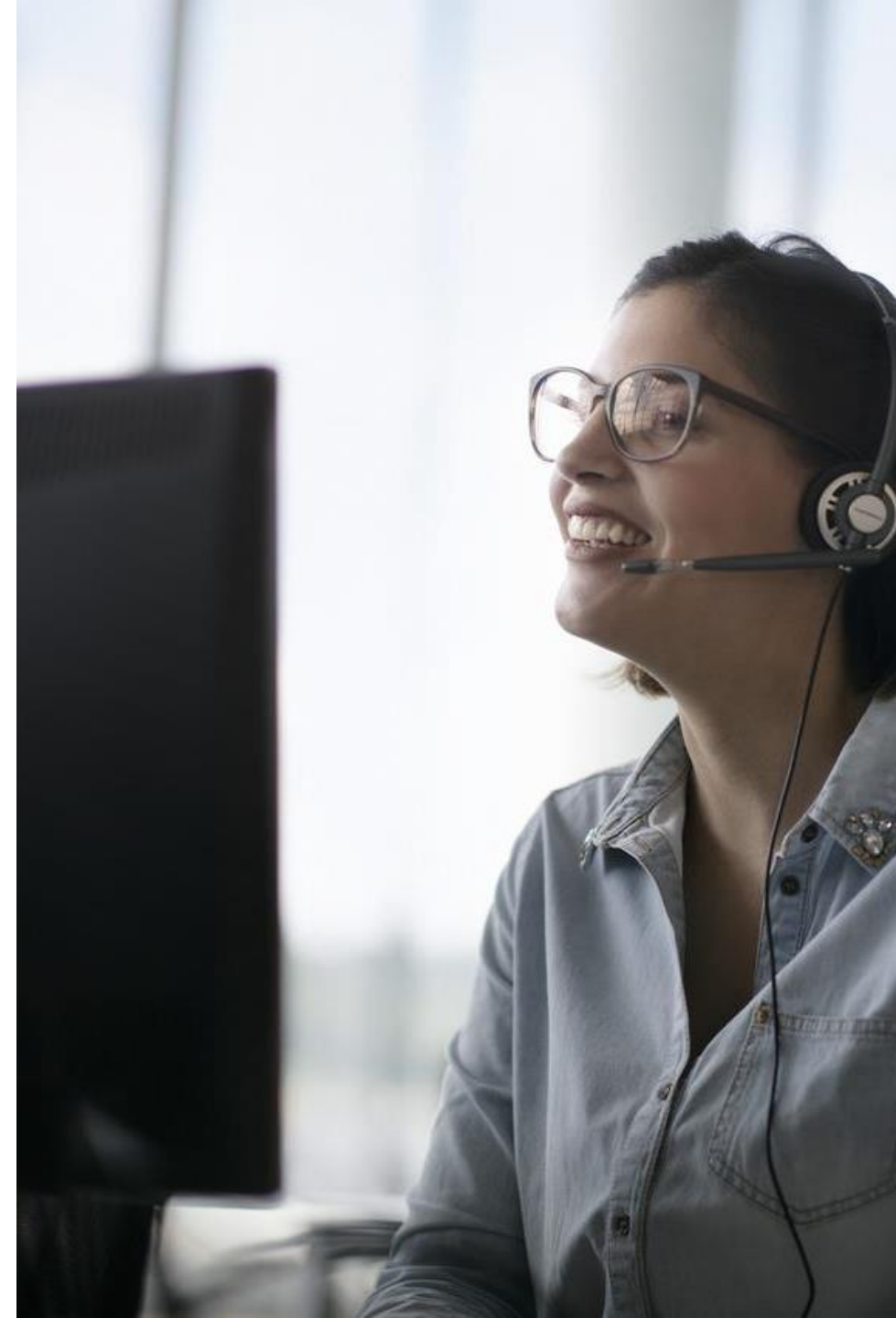


WSG Service Fulfillment

WSG XGS PON Use Cases

The following Use Case Matrix shows which use case what "OrderType" and/or "BusinessType" for XGS PON is to be used:

From \ To	To BBCS-F BX	To BBCS-F XGS-PON	To ALO (P2P)
BBCS-F BX	Order Type : ISP Change Business Type : ---	Order Type : Create Business Type : TechChange ----- OR ----- Order Type : Create Business Type : ISP Change (beinhaltet Tech Change)	ALO Order Type : Create ALO Business Type : ProductChange (ein ISP Change ist im Order möglich) ----- OR ----- ALO Order Type : Create ALO Business Type : New
BBCS-F XGS-PON	Order Type : Create Business Type : TechChange ----- OR ----- Order Type : Create Business Type : ISP Change (beinhaltet Tech Change)	Order Type : ISP Change Business Type : ---	ALO Order Type : Create ALO Business Type : ProductChange (ein ISP Change ist im Order möglich) ----- OR ----- ALO Order Type : Create ALO Business Type : New
ALO (P2P)	Order Type : Create Business Type : ProductChange ----- OR ----- Order Type : Create Business Type : ISP Change (beinhaltet Product Change)	Order Type : Create Business Type : ProductChange ----- OR ----- Order Type : Create Business Type : ISP Change (beinhaltet Product Change)	ALO Order Type : ISP Change ALO Business Type : ISP Change
FBC BX	Order Type : Create Business Type : New	Order Type : Create Business Type : New	ALO Order Type : Create ALO Business Type : New ----- OR ----- ALO Order Type : Create ALO Business Type : Product Change
FBC XGS-PON	Order Type : Create Business Type : New	Order Type : Create Business Type : New	ALO Order Type : Create ALO Business Type : New ----- OR ----- ALO Order Type : Create ALO Business Type : Product Change
No Service	Order Type : Create Business Type : New	Order Type : Create Business Type : New	ALO Order Type : Create ALO Business Type : New





WSG Service Fulfillment

WSG XGS PON Order

When ordering, the connection is prepared for activation after entering the OTO and plug, profile and service mix and the desired termination type. The ISP will receive the NSN and Activation Code. MAC address is optional:

Detail Order

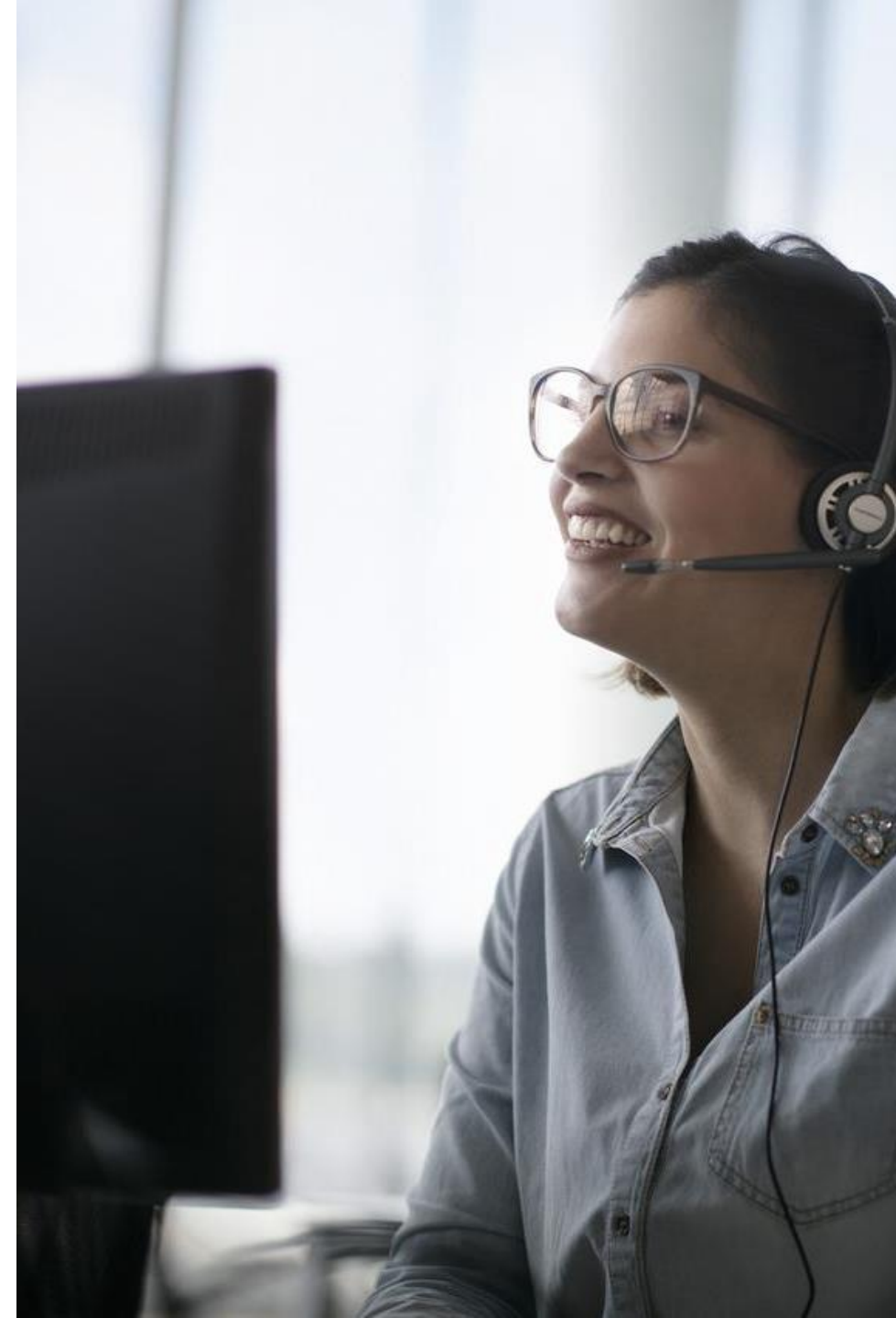
Main Virtual Order Internal Order Tracking CPE Info Predecessor Info

Order Info		DN Info		Qualified Endpoint	
Order Type	BBCS_CREATE	DN / VN / NSN (Requested)	0106527726	DN Office	79LIM
Order State	HOLDING	DN (STNR) / VN / NSN	0106527726	BB Device Location	LIM
Business Type	New	STNR DDI	-	Site	-
Creation Type	New	Dn Type	Netservices number	Site Category	-
Response	Ready for Activation	Date Info		Available Technology Type	-
Sf Exept Prio	Basic	Customer Wish Date	23. Sep. 2020	DSLAM Name	-
Activation Code	513676	Estimated Due Date/Time Start	23. Sep. 2020 10:00	Dslam Type	-
MAC Address	80:41:26:90:8B:7E	Estimated Due Date/Time End	23. Sep. 2020 12:00	Technology Type	-
ISP / Order Nr Info		Termination Data	-	Vectorized	-

If the order is in the order state "Holding" with "Ready for Activation" the end customer can start the activation:

History

#	User Name	Order State	DN (STNR) / VN / NSN	Response	Transaction Date / Time	BB Type	Speed Profile Nr	Responsible User	Kind Of Problem	Responsible User Comment	Comment	Customer Wish Date	Estimated Due Date / Time Start	Estimated Due Date / Time End
Detail	Batch	HOLDING	0106527726	Ready for Activation	23. Sep. 2020 09:53:34.801	XGS-PON	-	-	-	-	-	23. Sep. 2020	23. Sep. 2020 10:00:00	23. Sep. 2020 12:00:00
Detail	Batch	ENTERED	0106527726	Ready for Activation	23. Sep. 2020 09:53:18.142	XGS-PON	-	-	-	-	-	23. Sep. 2020	23. Sep. 2020 10:00:00	23. Sep. 2020 12:00:00
Detail	Manfred Schaufelberger	ENTERED	0106527726	-	23. Sep. 2020 09:51:20.469	XGS-PON	-	-	-	-	-	23. Sep. 2020	23. Sep. 2020 10:00:00	23. Sep. 2020 12:00:00
Detail	Manfred Schaufelberger	ENTERED	0106527726	-	23. Sep. 2020 09:50:19.741	XGS-PON	-	-	-	-	-	23. Sep. 2020	23. Sep. 2020 10:00:00	23. Sep. 2020 12:00:00





WSG Service Fulfillment

WSG XGS PON adding the MAC address

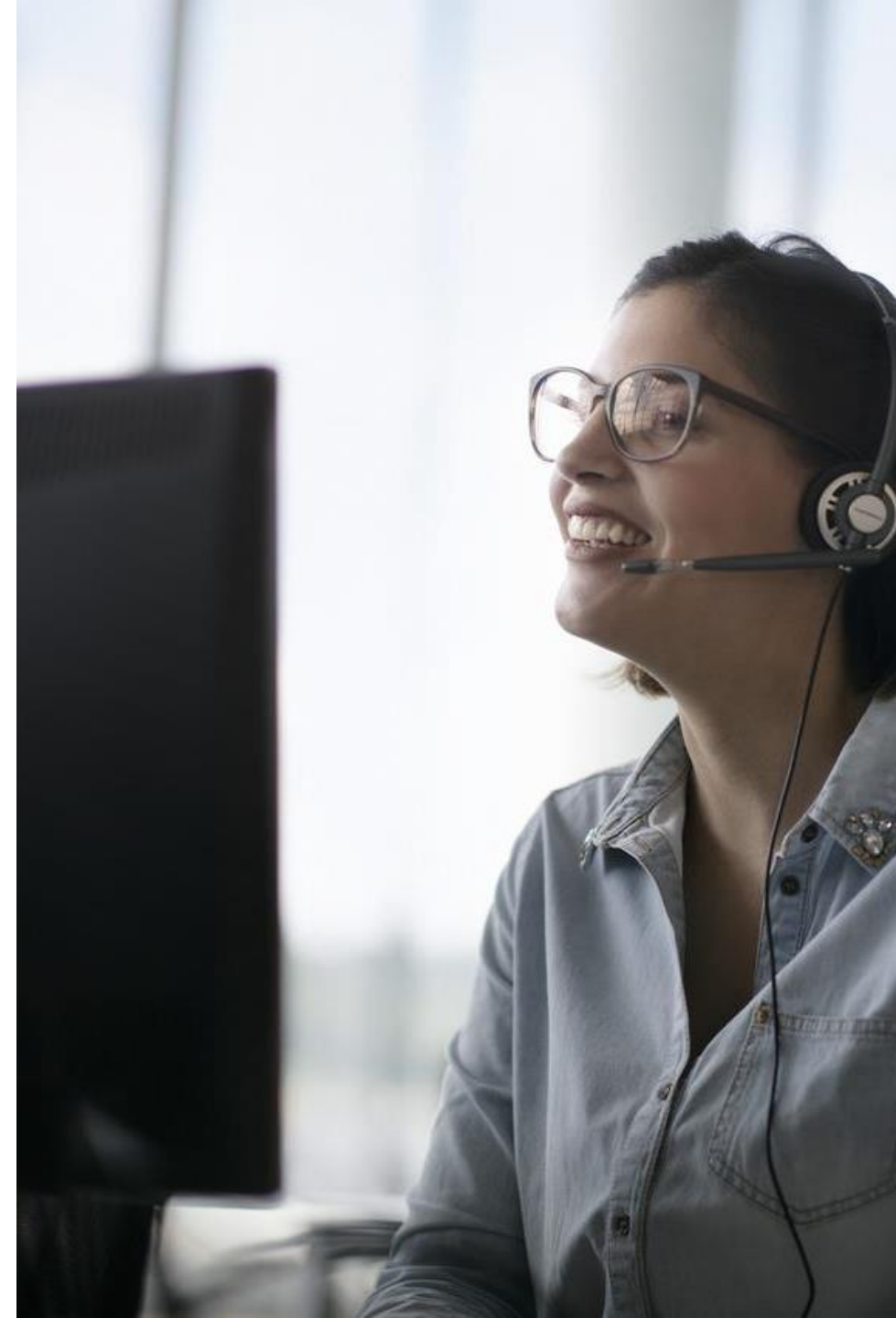
In the WSG GUI, only the new alternative links support ordering with MAC address:

BBCS Access Services Help / Contact Logout Holger Schori

- Place Order
- Maintain Order
- Voice Messages
- Installation Ticket
- Change Ticket
- Transaction Overview
- APV
- Admin Tasks
- Documents
- Reports
- Home Page
- Alternative Links

Basis Creation

ISP	100036 - Sunrise Communications AG (R)	
Suppress LQS Check	N	
Suppress SLA Check	N	
Suppress Date Check	N	
Suppress Request	N	
Customer Wish Date	25. Sep. 2020	(dd mm yyyy)
Contr Element	BBCS_F (Fiber)	
BB Type	XGS-PON	
Session Type	DHCP	
Termination		
DN / VN / NSN		(0314445566)
MAC Address		





Activation

XGS-PON Activation



Activation with splash page

The activation with splash page is based on the technology known from the preorder. The end customer connects to the internet box (ONT) with his PC or mobile and is accompanied by the activation on the splash page.



Self guided activation

The end customer is accompanied by the splash page through its activation and sees the current progress/status.



Device settings

Depending on the selected device and its settings and limitations, the display of the splash page might be more or less complex.



WSG Service Fulfillment

XGS CREATE : Splash page

XGS-PON Pairing process

After the ONT is connected for the first time in the case of a new connection, the end customer is directed to the splash page after accessing a website ¹⁾

At this point, the OTO ID, the plug and the activation code (which was communicated when the order was created) must be entered, alternatively OTO-ID, Plug and NSN work as well.

After typing, the activation process starts, and the progress is continuously displayed to the customer.

¹⁾Note: Only devices approved and whitelisted for XGS-PON by Swisscom can be operated on an BCS XGS-PON access

DE

Anschluss aktivieren

Dieser Anschluss ist noch nicht aktiviert!

Bitte aktivieren Sie Ihren Anschluss wie folgt:

Bitte geben Sie die OTO-ID und die Steckplatz-Nummer (Plug) der Glasfasersteckdose an, an welcher Sie ihre Internet Box angeschlossen haben.

OTO-ID Plug-Nummer

Bitte geben Sie den Aktivierungscode ein. Dieser besteht entweder aus zehn Ziffern (Bsp. 0123456789), oder aus sechs Ziffern (Bsp. 123456).

Aktivierungscode:

Aktivieren

Falls Sie keinen Aktivierungscode erhalten haben, kontaktieren Sie bitte Ihren Dienstanbieter für die Aktivierung Ihres Anschlusses. Halten Sie dabei die OTO-ID / Steckplatz-Nummer (Plug) bereit.

Ihre Anschluss-Identifikationsnummer: **AC9.003.810.530**





"MAC Based" activation

The ISP assigns the MAC address of the WAN interface to the connection. If the Internet box (ONT) connects to the specified access, the MAC address in the DORA process initiates the activation of the connection.



Easy, fast activation

Activation starts automatically with the assigned "Basic Connectivity" and the end customer does not need to connect a PC or mobile device. This not only saves time, it also simplifies the process considerably for the layman.



Activation not guides by the network

The end customer is no longer actively guided through the activation. The ISP must integrate this part with the status messages in the WSG in its onboarding process.



XGS-PON activation on DHCP termination via splash page (similar to DSL with Preorder)

Order entering in WSG

In the WSG, the order is entered as usual by selecting termination type DHCP.

The order is waiting in the holding state "Ready for activation".

Connecting the modem/ONT to the customer access

A modem/ONT configured for DHCP is connected to the access and connects to Swisscom's "Walled Garden".

- VLAN ID 10 is needed for DHCP

Activation of the access via splash page

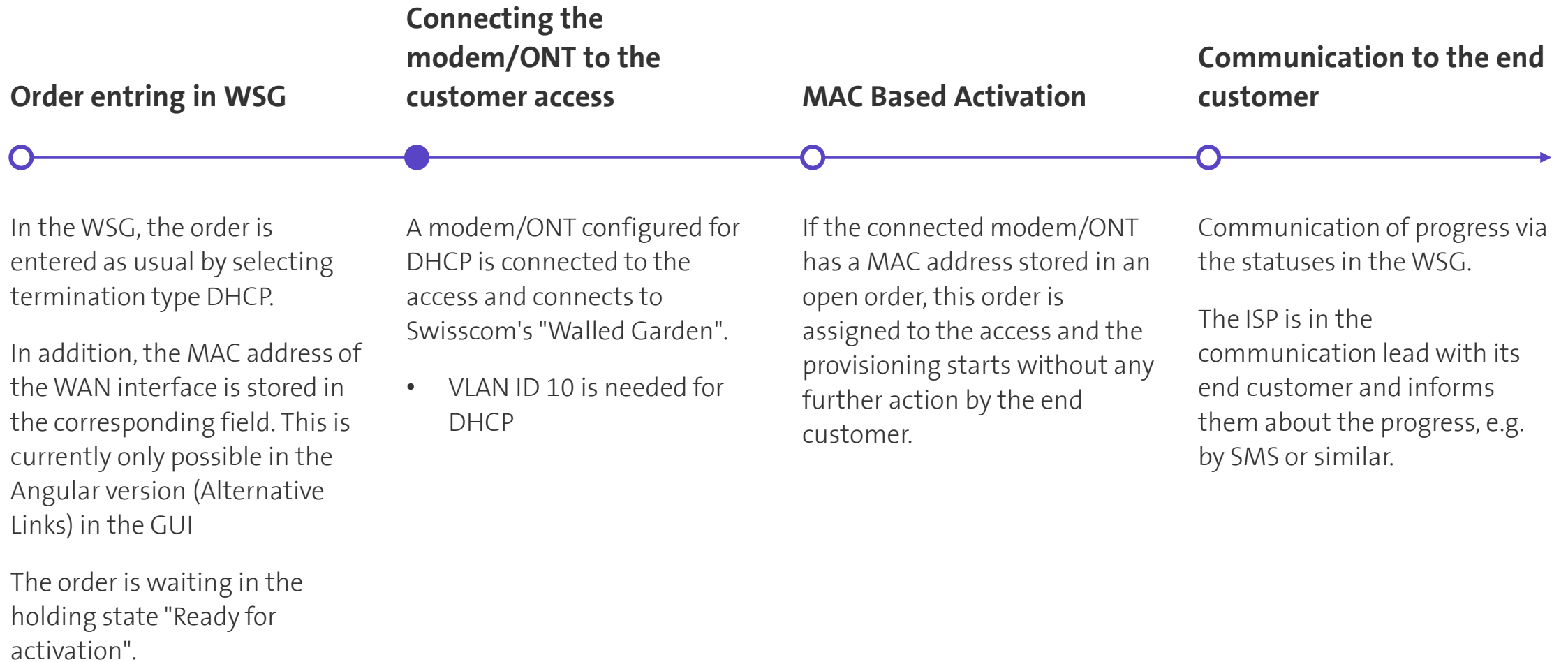
When a web site via a device (PC, tablet, mobile,..) is opened, the redirect is initiated to the splash page. Credentials needed:

- Activation Code (6 digits or NSN)
- OTO and Plug Number

Customer is guided through rest of activation on the splash page.

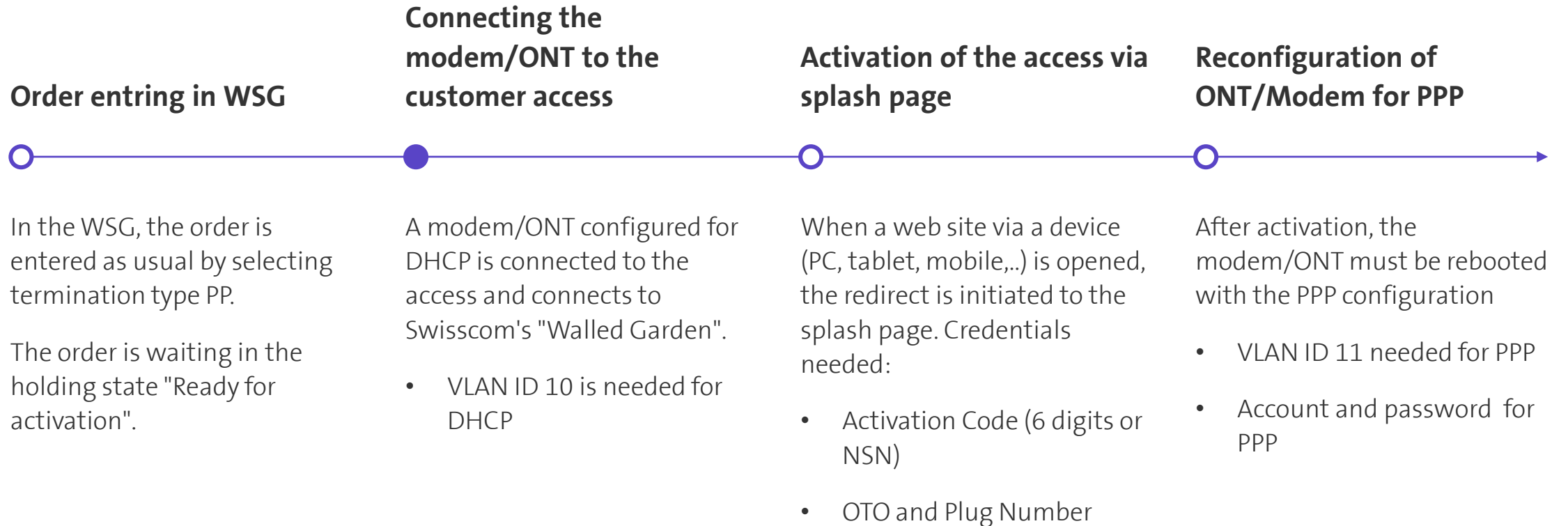


XGS-PON activation on DHCP termination via MAC Based Provisioning (similar to DSL with Preorder)



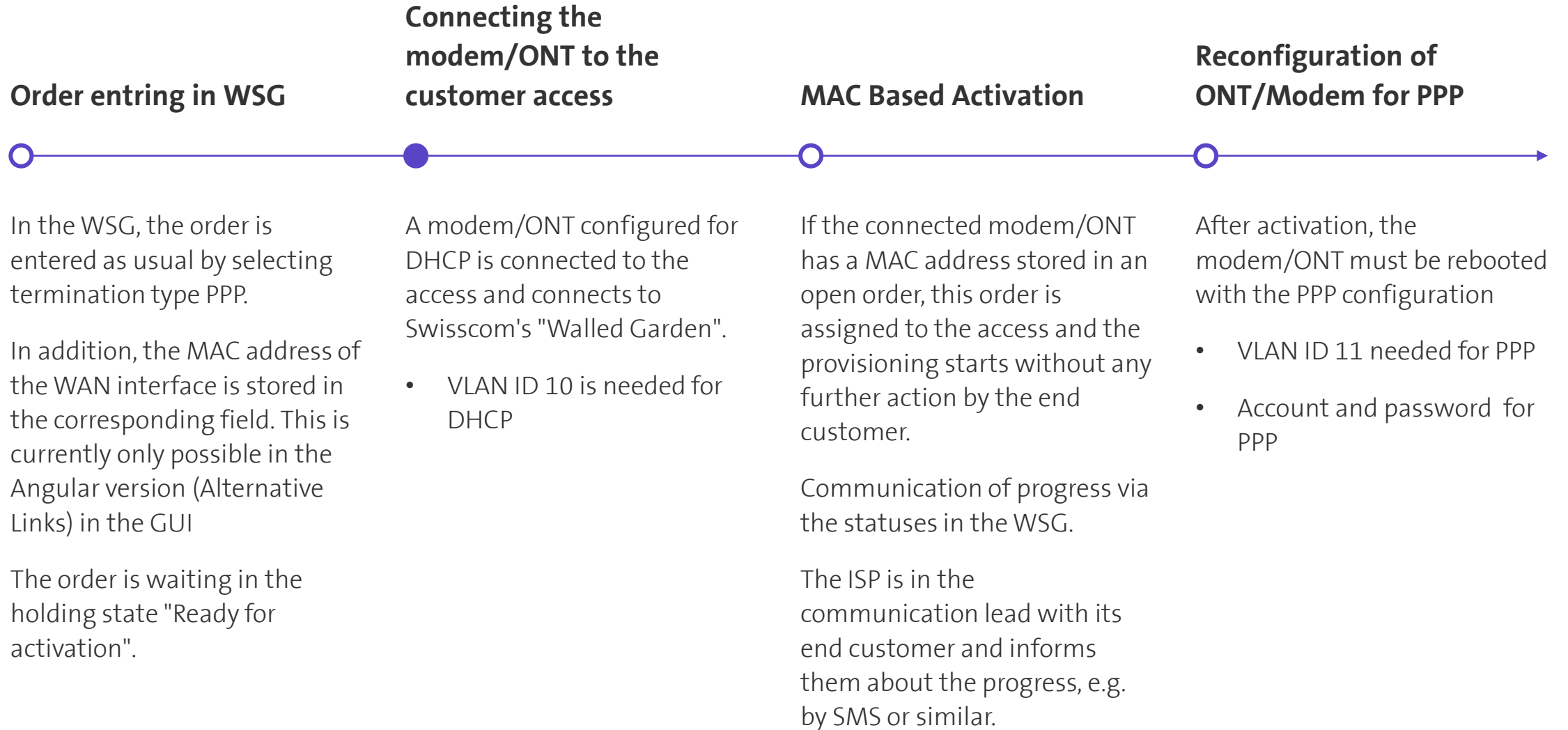


XGS-PON activation on PPP termination via splash page (similar to DSL with Preorder)





XGS-PON activation on PPP termination via MAC Based Provisioning (similar to DSL with Preorder)





ONT Change

Replacing the ONT on an existing XGS-PON access



ONT change with XGS-PON

Splash page

- End customer connects the new ONT with DHCP configuration on the OTO and connects its internet access device (PC, tablet, mobile,..) with the ONT
- When a website is first accessed (http traffic), the browser is redirected to Swisscom's splash page
- On the appearing website, the end customer must enter OTO and plug number, as well as the 10-digit activation code (NSN)
- Splash page guides the end customer by activating the new ONT
- Additional for PPP: Reconfiguration of the ONT to PPP afterwards

- New unpaired ONT, OTO and plug number, as well as the NSN (10-digit activation code) are required.

MAC based

- ISP registers new WAN MAC address on the connection in the WSG ("ONT Change" in WSG)
- End customer connects the new ONT with DHCP configuration at the OTO plug
- ONT change will be initiated automatically
- ISP informs end customer of progress and completion
- Additional for PPP: Reconfiguration of the ONT to PPP afterwards

- WAN MAC address of the new ONT must be assigned to the access. This is done using the new procedure "ONT Change" in the WSG.



ONT Certification

Process for certification and whitelisting an ONT



Process for certification and whitelisting an ONT for XGS-PON

