



BBCS Release Information

November 2020

Swisscom (Schweiz) AG

Wholesale

swisscom

C1 Public



1. Service Fulfillment
2. Service Assurance
3. WSG
4. Release Dates

contents



Service Fulfillment

Enhanced Information in Qualification

All fiber qualifications show who is responsible for the in-house installation at the requested location.

The information is displayed in the Service Availability Qualification as well as in the Service Qualification for the products BBCS-F, ALO and CoPa

In addition, it appears in the "Order Detail" of any order or is returned via the interface

List of Building Entry Points																													
Location Id (BEP)	9999999	BEP State	CONNECTED																										
Street	Tibco-Simulator-00&A&Ei-Strasse	Availability Date/Target Date	-	Quality Class	GK3																								
House Nr	123d	In House Allowed	Yes	First In House	No																								
Building	Lokal 9999999-0	Max Access Speed Kbps	1000000	Initial Mounting Shaft Capacity	available																								
ZP	3000	Site Category	standard	BEP Builder	KOPA																								
City	Bern	Build Responsible Inhouse	-																										
BEP Events	<table border="1"><thead><tr><th>Event Type</th><th>Event Time Stamp</th><th>Event Reason</th><th>Event From</th><th>Event To</th><th>Sequence Nr</th></tr></thead><tbody><tr><td>1 - TargetDateChange</td><td>25.10.2020 17:11</td><td>EventReason 1 EventReason</td><td>F 1</td><td>T 1</td><td>1</td></tr><tr><td>2 - ValidityClassException</td><td>15.10.2020 17:11</td><td>EventReason 2 EventReason</td><td>F 2</td><td>T 2</td><td>2</td></tr><tr><td>2 - ValidityClassException</td><td>30.09.2020 17:11</td><td>EventReason 3 EventReason</td><td>F 3</td><td>T 3</td><td>3</td></tr></tbody></table>					Event Type	Event Time Stamp	Event Reason	Event From	Event To	Sequence Nr	1 - TargetDateChange	25.10.2020 17:11	EventReason 1 EventReason	F 1	T 1	1	2 - ValidityClassException	15.10.2020 17:11	EventReason 2 EventReason	F 2	T 2	2	2 - ValidityClassException	30.09.2020 17:11	EventReason 3 EventReason	F 3	T 3	3
Event Type	Event Time Stamp	Event Reason	Event From	Event To	Sequence Nr																								
1 - TargetDateChange	25.10.2020 17:11	EventReason 1 EventReason	F 1	T 1	1																								
2 - ValidityClassException	15.10.2020 17:11	EventReason 2 EventReason	F 2	T 2	2																								
2 - ValidityClassException	30.09.2020 17:11	EventReason 3 EventReason	F 3	T 3	3																								

List of Building Entry Points	
Building Entry Point	
BEP State	CONNECTED
Availability Date/Target Date	-
Quality Class	GK3
In House Allowed	Yes
First In House	No
Max Access Speed Kbps	1000000
Initial Mounting Shaft Capacity	available
BEP Builder	KOPA
Site Category	standard
Build Responsible Inhouse	-
Address	

Layer 1 / Basis	
Contr Element	BBCS_F (Fiber)
Fiber Info	
Socket Id	A 202.011.005
Cooperation Id	P_A.202.011.005
Plug Nr	4
Build Responsible Inhouse	-





Service Assurance Proactive Alarming

Multiple faults - Enhance xDSL Info

xDSL Info provides information about migrations and multiple faults (Mass Outages) affecting the connection.

xDSL Info Result

ISP 777710 - Testaccount WSG Team

DN / VN / NSN 0106940662

[Back](#)
[Refresh](#)
[Transaction Overview](#)
[Create Ticket](#)
[Modify Access Profile](#)

[Start LQD 24hrs](#)
[Start LQD 2min](#)
[Start FPC](#)
[Start Resync Line](#)
[Start Reconfig Line](#)

[xDSL Info](#)
[MELT Measurements](#)
[Access Optimization](#)
[Access Optimization History](#)
[Reconfigure Line History](#)
[Resync Line History](#)
[Migrations / Outages](#)

Summary

Request Date	09. Nov. 2020 07:54:40	09. Nov. 2020 07:43:48
Response Date	09. Nov. 2020 07:54:53	09. Nov. 2020 07:44:11
User Name	USER ISP	USER ISP
TIBCO/NC-CIA	-	000: OK
NA	-	000: OK
NA-CP	-	-
Fetch Realtime Data	No	No
Fetch History Data	Yes	Yes
Migrations / Outages	Yes	No





Service Assurance

Proactive Alarming

Mass Outage - Enhance xDSL Info

When an xDSL Info Request is received via GUI or B2B, WSG now first checks whether the connection is currently affected by a migration or mass outage.

If so, only limited calls to the surrounding systems are executed. Especially long-lasting calls are not used. Accordingly, the xDSL Info Response does not contain NA Measurement History and Charts.

xDSL Info Result

ISP 777710 - Testaccount WSG Team
DN / VN / NSN 0106940662

[Back](#) [Refresh](#) [Transaction Overview](#) [Create Ticket](#) [Modify Access Profile](#)

[Start LQD 24hrs](#) [Start LQD 2min](#) [Start FPC](#) [Start Resync Line](#) [Start Reconfig Line](#)

xDSL Info [MELT Measurements](#) [Access Optimization](#) [Access Optimization History](#) [Reconfigure Line History](#) [Resync Line History](#) [Migrations / Outages](#)

If not, further measurement results can be requested within the xDSL-Info function.

xDSL Info Result

ISP 777710 - Testaccount WSG Team
DN / VN / NSN 0106940662

[Back](#) [Refresh](#) [Transaction Overview](#) [Create Ticket](#) [Modify Access Profile](#)

[Start LQD 24hrs](#) [Start LQD 2min](#) [Start FPC](#) [Start Resync Line](#) [Start Reconfig Line](#)

xDSL Info [NA Measurement History](#) [MELT Measurements](#) [Access Optimization](#) [Access Optimization History](#) [Day Charts](#) [15 Min. Charts](#)

[Reconfigure Line History](#) [Resync Line History](#) [Migrations / Outages](#)





Service Assurance Proactive Alarming

Display Migrations- and UMSA-Projects of the last 10 working days

XDSL Info provides information about migrations and multiple disruptions (mass outages) that affect the BBCS connection or have occurred in the last 10 working days.

xDSL Info Result

ISP 777710 - Testaccount WSG Team
DN / VN / NSN 0106940662

[Back](#) [Refresh](#) [Transaction Overview](#) [Create Ticket](#) [Modify Access Profile](#)

[Start LQD 24hrs](#) [Start LQD 2min](#) [Start FPC](#) [Start Resync Line](#) [Start Reconfig Line](#)

[xDSL Info](#) [MELT Measurements](#) [Access Optimization](#) [Access Optimization History](#) [Reconfigure Line History](#) [Resync Line History](#) **Migrations / Outages**

Current events

Event Type	Event Id	Event Cause	Network Element Name	Start Date	End Date
Mass Outage	SIM-20034	-	ipd-bem640-s-fa-01	08. Nov. 2020 22:30:00.000	09. Nov. 2020 08:02:00.000

Past events

Event Type	Event Id	Event Cause	Network Element Name	Start Date	End Date
Mass Outage	SIM-9995638577	-	ipd-bem640-s-fa-01	02. Nov. 2020 10:00:00.000	04. Nov. 2020 13:00:00.000





Service Assurance

Proactive Alarming

Display Migrations- and UMSA-Projects of the last 10 working days

GUI: In the Main Tab "xDSL Info" the summary shows whether the connection is currently affected by a migration or multiple faults..

The tab "Migrations/Outages" lists the "Current events" and the "Past events" (history of the last 10 working days).

B2B: In the getXdslInfoResponse, a new element signals whether the connection is currently affected by a migration or a multiple fault.

With a new operation the ISP can request a list of "Current events" and "Past events" (history of the last 10 working days).

Please note: This B2B request must be preceded by a getXdslInfoRequest that was sent within the last 5 minutes.

Otherwise the following error message is returned:

MO3'No recent data found for this NSN. Do a getXdslInfo first and then try again.'

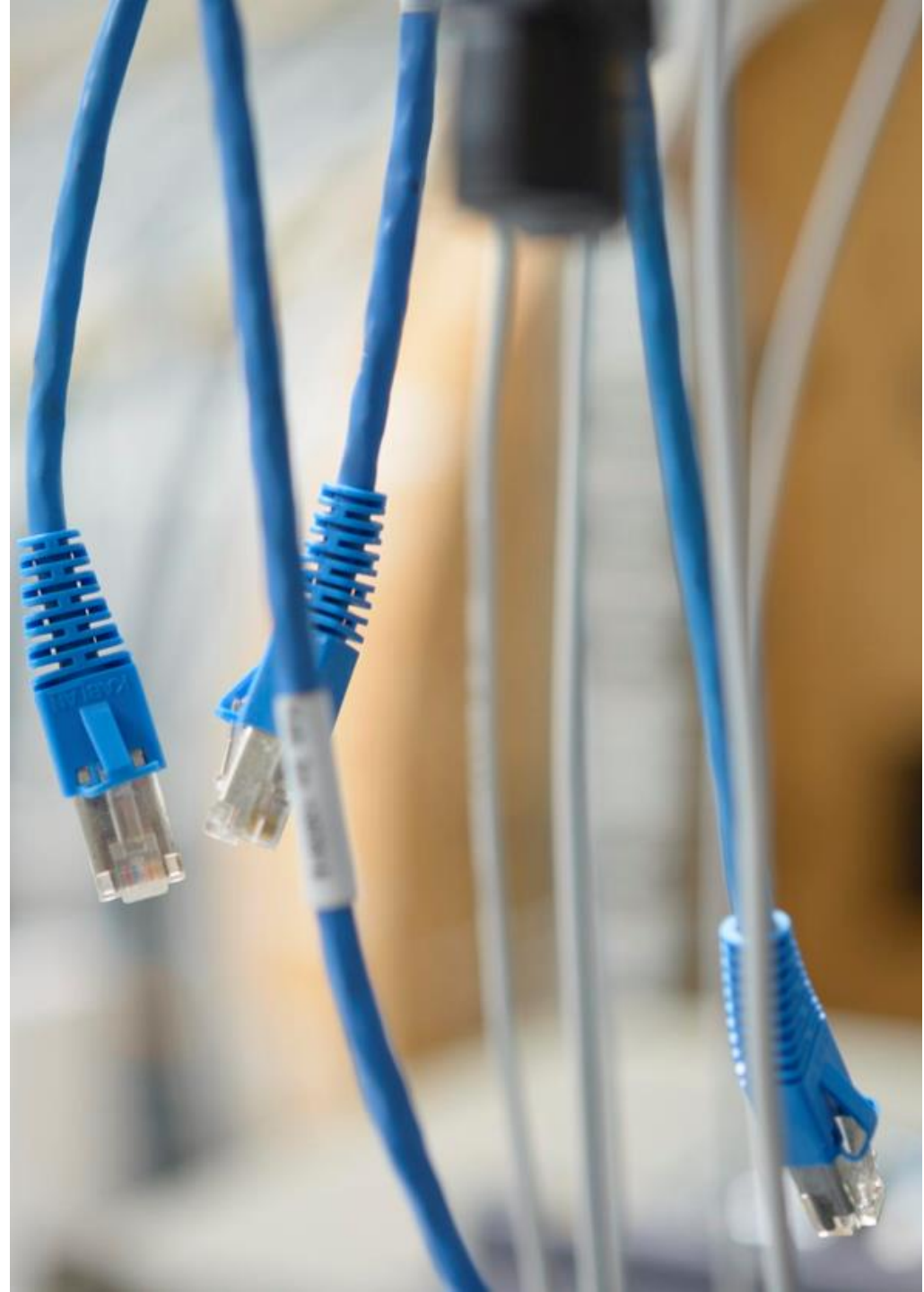




WSG

TDM Phase Out clean up (Phase II)

The TDM phase out was completed at the beginning of 2020. Because of this, fields and functions that are no longer required are removed from WSG.





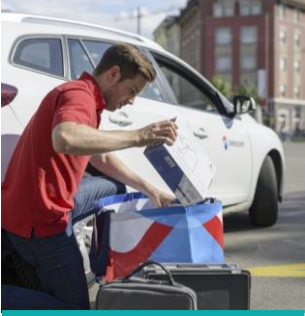
Upcoming WSG Releases

WSG release- and test system-upgrade dates

Release		Deployment	WSG XML Schema Version Upgrade	Upgrade Testsystem
mr2011	Saturday to Monday	21.-23.11.2020	Mandatory	04.11.2020
mr2101	Tuesday to Wednesday	26.-27.01.2021	Optional	13.01.2020
mr2102	Tuesday to Wednesday	23.-24.02.2021	Optional	10.02.2021
mr2103	Tuesday to Wednesday	23.-24.03.2021	Optional	10.03.2021
mr2104	Tuesday to Wednesday	20.-21.04.2021	Mandatory	07.04.2021
mr2105	Tuesday to Wednesday	18.-19.05.2021	Optional	05.05.2021
mr2106	Tuesday to Wednesday	15.-16.06.2021	Optional	02.06.2021
mr2107	Tuesday to Wednesday	20.-21.07.2021	Optional	07.07.2021
mr2108	Tuesday to Wednesday	24.-25.08.2021	Optional	11.08.2021
mr2109	Tuesday to Wednesday	21.-22.09.2021	Optional	08.09.2021



Contact information



Swisscom AG (Schweiz)

Wholesale

Alte Tiefenaustrasse 6

CH-3050 Bern

bbcs.service@swisscom.com

www.swisscom.ch/wholesale

