



BBCS Release Information

November 2023

Swisscom (Schweiz) AG

Wholesale

swisscom

C1 Public



1. WSG Interface Update
2. Service Fulfillment
3. Release Dates

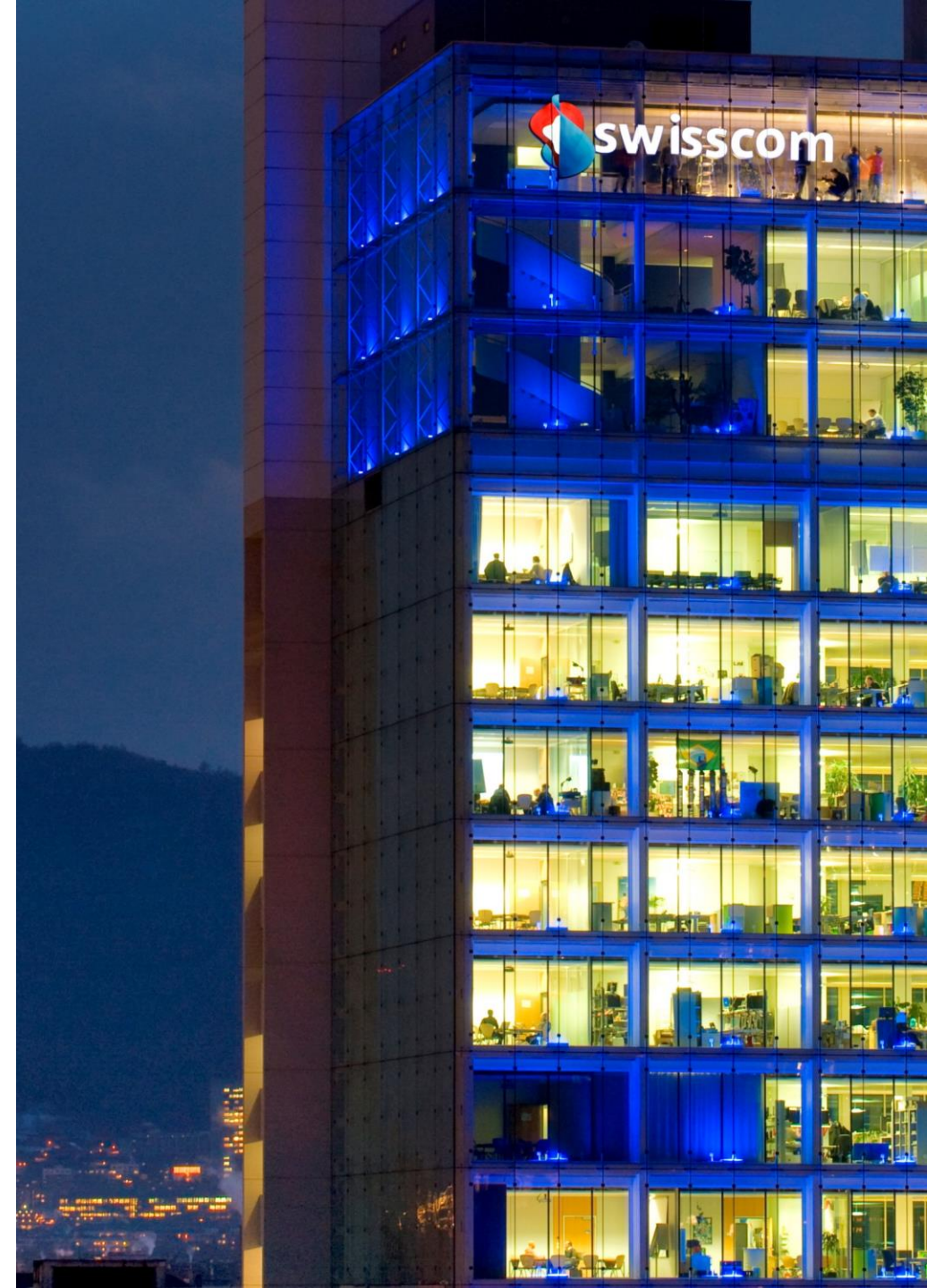
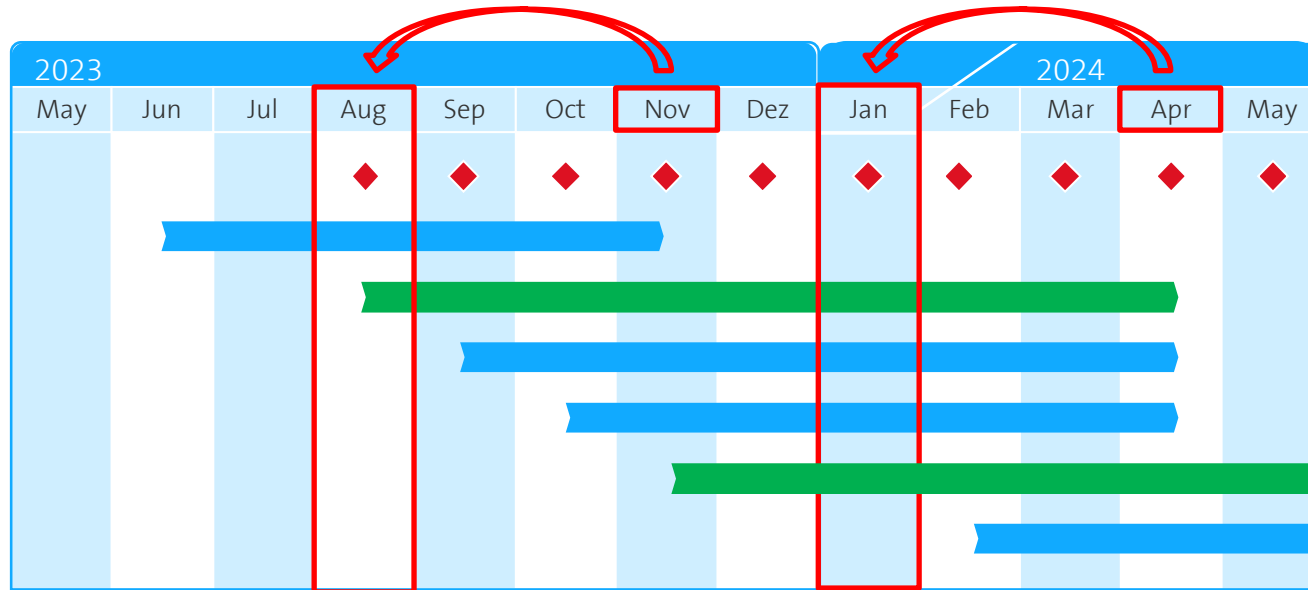
contents



WSG

Reminder Validity of the WSG XML Schema Versions

The WSG XML scheme version must be updated in November and April to a version published in the last three months before.



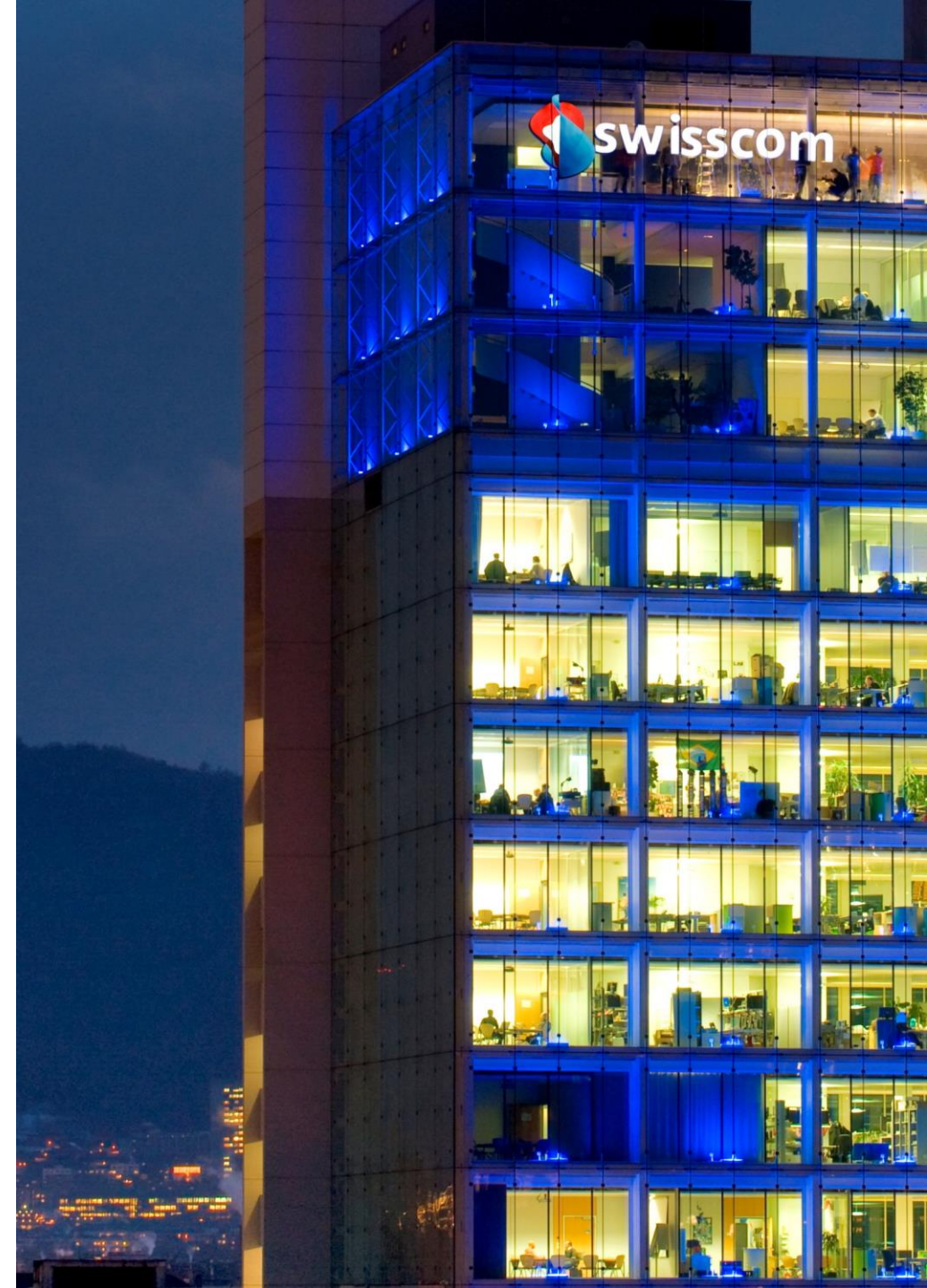


WSG

Harmonisation of the date format

The download files (reports) in the following screens have been harmonised (uniform date format, translation of LOV values):

- BBCS-Access > Maintain-Order
- BBCS Trouble Ticket > Access TT > Maintain > Read Access Trouble Tickets
- Services > WSG Information Services > Clarification Ticket > Maintain





WSG

Pre-Information Change of Interface

As part of the modernisation of WSG B2B, we are changing the B2B protocol from SOAP to a modern B2B REST architecture in the medium term.

In preparation for this step, we will start to publish the existing B2B REST documentation in the coming releases.

We will communicate about the definitive replacement at an early stage.

Documents

ISP

B2B_General_Functions_V28.pdf

Download

Internal

B2B_General_Functions_V28.pdf
B2B_General_Functions_V30.pdf
B2B_xDSL-Info_Function_V21.pdf
ISP_BBCS_Assurance_User_Manual_V68.pdf
ISP_BBCS_Assurance_User_Manual_V69.pdf
WSG_LOV_V56.pdf
WSG_LOV_V57.pdf
WSG_Messages_V127.pdf
WSG_Messages_V128.pdf
ngwsg-asr-b2b-v1.zip
wsgTt_v46.0.5.zip
wsgTt_v46.0.6.zip

Download





OTO@BEP

Additional information on OTO@BEP

OTO@BEP:

Primarily in single-family homes with an OTO socket, the OTO socket may be installed directly at the BEP during construction (e.g. in the basement). An extension of the BEP is then pulled into the desired room (OTO extension).

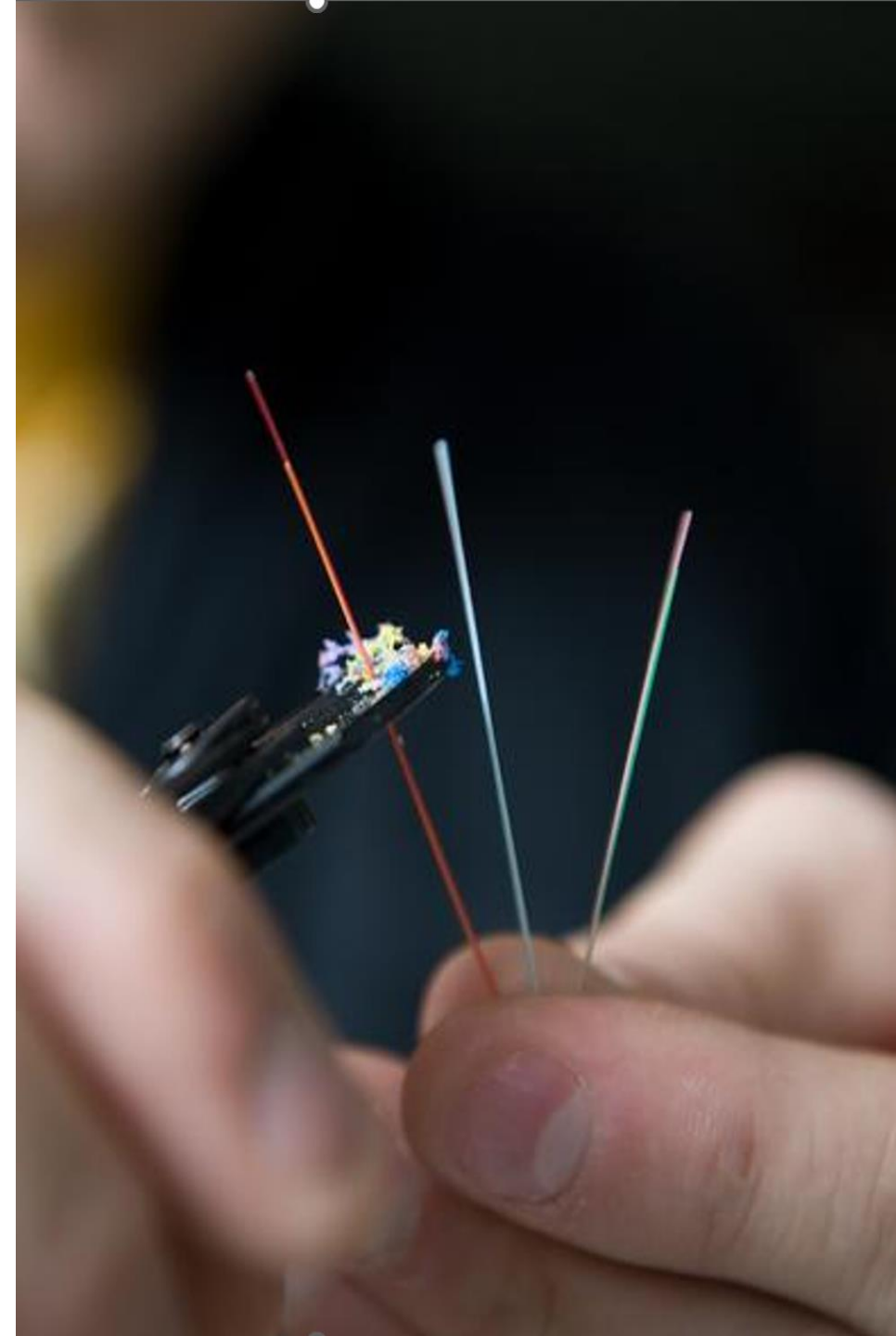
Both boxes are labelled with the same ID or OTO extension.

If the end customer is now to use a different plug, he will most likely try this on the extension. However, there is only 1 fibre from the OTO in the basement. The change must be made in the basement, where there are effectively 2 fibres between the BEP and the primary OTO.

This additional information greatly simplifies processing.

The feature OTO@BEP does not necessarily mean that an extension is also available, but it should be taken into account in the interaction with the end customer.

In principle, the area downstream of the primary OTO socket is the responsibility of the homeowner, but we nevertheless include this attribute in the order systems (e.g. fibre info, SAQ...) in the interests of customer satisfaction.





Service Fulfillment

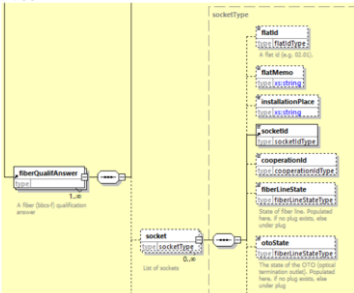
Enhancement of qualification information OTO@BEP

Extension BBCS-F Quali (BX and XGS-PON):

The "Installation Place" contained in the LIS (searchLineIdentification) response is now displayed/returned in the BBCS-F Quali (GUI + B2B).

B2B:

- Schema: `wsgBbOutbound.wsdl`, `wsgLqsSaq.wsdl` V56
- Operation: Fiber Quali (Response)
- Type: `socketType`
- Anpassung: Element `installationPlace` zugefügt



BBF

Hewlett Packard

BBFCS Access

Services

Help / Contact

Logout

BB FUL SystemSuperUser

Place Order

Maintain Order

Transaction Overview

Admin Tasks

Documents

Reports

Home Page

Alternative Links

ISP

777710 - Testaccount WSG Team

Contr Element

BBFCS_F (Fiber)

BB Type

Fiber

Socket Id

A.010.015.005

Responses

Fiber , BBFCS_F (Fiber)

Fiber

Location Id

-

DN Office

-

BB Device Location

-

List of Sockets

Address

Site Development 61%

BEP

Socket Id	Plug Id	Flat Id	Fiber Line	OTO State	Usage Type	
BEP P_A010015005	A.010.015.005	1	8.08	AVAILABLE	CONNECTED	Special Usage
	A.010.015.005	2	8.08	AVAILABLE	CONNECTED	Special Usage
	A.010.015.005	3	8.08	AVAILABLE	CONNECTED	Special Usage
	A.010.015.005	4	8.08	AVAILABLE	CONNECTED	Special Usage





WSG Service Assurance

Fibre Info extension with OTO@BEP

Fiber Info

The "Installation Place" and "Flat Memo" contained in the LIS (searchLineIdentification) response are displayed/returned in the "WSG Trouble Ticket" GUI under "Fibre Info" in the "Access Information" Card and via B2B (ngwsg-asr-b2b-v1) under "inHouseInstallation"

B2B:

- Schema: ngwsg-asr-b2b-v1.json V1 (REST)
- Object: InHouseInstallation
- Anpassungen: Neue Properties **flatMemo** und **installationPlace** zugefügt

```
InHouseInstallation {  
  otoGaiaId      string  
  flatId         string  
  flatMemo       string  
  installationPlace string  
}
```

WSG Trouble Ticket Services Help / Contact Logout ASS SystemSuperUser

Access TT
xDSL Info
Fiber Info
Rogue Alarm
Connectivity TT
Connectivity Check
UMSA/Planned Work
Transaction Overview
Admin
Documents
Reports
Alarms
Alternative Links

Fiber Info

General Information

ISP Id	777710
OTO Id	A.123.123.123.0
OTO Plug Number	1
Nan	0101234567
Access Id	AC3.123.456.789
Session Type	DHCP
Access Technology Type	XIGS-PON
Base Contract Element	BBICS_F (Fiber)
Access Speed Profile	100000 up / 100000 down
Service Contract Element	Best Effort on Fiber
Service Speed Profile	10000 up / 10000 down

Access Information

General	
Gaia Id OTO	102440073
Flat Id	01/01
Flat Memo	S. OG
Installation Place	BEP
Access Network	79UNIEUNE
Central Office	79UNE
Device Location	UNE
FAN	
Domain	01
Name	123
Port	port 0/1/2/3
Rack	01
Slot Id	5

Mass Outage

Affected	No
----------	----

Rogue Alarm

Affected	No
----------	----

OLT (Virtual Fan Port)

Port Status	UP
TX Laser Bias	14.1 uA
TX Voltage	3.21 uV
TX Temp	53.2 C
Last Downtime	10. Jan. 2021 13:02:04

ONT (Router)

ONT Serial Number	5A5958458CABC57E
RX Power	-5 dBm
TX Power	-2.3 dBm
MAC Address	06A1B2C3D0000
IP Address	10.123.123.123
Last Lease Time	10. Feb. 2021 12:10:05





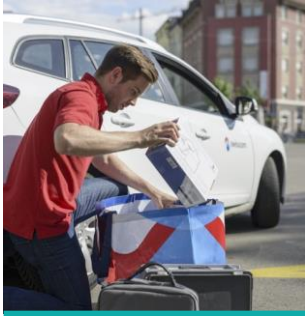
Upcoming WSG Releases

WSG release- and test system-upgrade dates

Release		Deployment	WSG XML Schema Version Upgrade	Upgrade Testsystem
mr2311	Tuesday to Wednesday	14.-15.11.2023	Mandatory	01.11.2023
mr2401	Tuesday to Wednesday	23.-24.01.2024	Optional	10.01.2024
mr2402	Tuesday to Wednesday	20.-21.02.2024	Optional	07.02.2024
mr2403	Tuesday to Wednesday	19.-20.03.2023	Optional	06.03.2024
mr2404	Tuesday to Wednesday	23.-24.04.2024	Mandatory	10.04.2024
mr2405	Tuesday to Wednesday	28.-29.05.2024	Optional	15.05.2024
mr2406	Tuesday to Wednesday	25.-26.06.2024	Optional	12.06.2024
mr2407	Tuesday to Wednesday	23.-24.07.2024	Optional	10.07.2024
mr2408	Tuesday to Wednesday	20.-21.08.2024	Optional	07.08.2024



Contact information



Swisscom AG (Schweiz)

Wholesale

Alte Tiefenaustrasse 6

CH-3050 Bern

bbcs.service@swisscom.com

www.swisscom.ch/wholesale

